



COLORADOSCHOOLOF**MINES**

2008 GRADUATION AND PERSISTENCE REPORT



Any questions
Concerning material contained
In this book should be directed to:

Institutional Research
Colorado School of Mines
1500 Illinois Street
Golden, CO 80401

Telephone: (303) 273-3383
Fax: (303) 273-3950
Email: tdouthit@mines.edu

Table of Contents

TABLE OF CONTENTS	3
<u>FIRST-TIME FRESHMAN COHORT</u>	
<i>GRADUATION RATES</i>	
FIRST-TIME FRESHMAN COHORT	4
BY GENDER	5
BY ETHNICITY	6
BY ORIGINAL TUITION CLASSIFICATION	8
BY ORIGINAL MAJOR	9
<i>PERSISTENCE RATES</i>	
BY GENDER	10
BY ETHNICITY	11
BY ORIGINAL TUITION CLASSIFICATION	12
<u>TRANSFER COHORT</u>	
<i>GRADUATION RATES</i>	
TRANSFER COHORT	13
BY GENDER	14
BY ETHNICITY	15
BY ORIGINAL TUITION CLASSIFICATION	17
BY ORIGINAL MAJOR	18
<i>PERSISTENCE RATES</i>	
BY GENDER	19
BY ETHNICITY	20
BY ORIGINAL TUITION CLASSIFICATION	21
<u>ALL NEW COHORT</u>	
<i>GRADUATION RATES</i>	
ALL NEW COHORT	22
BY GENDER	23
BY ETHNICITY	24
BY ORIGINAL TUITION CLASSIFICATION	26
BY ORIGINAL MAJOR	27
<i>PERSISTENCE RATES</i>	
BY GENDER	28
BY ETHNICITY	29
BY ORIGINAL TUITION CLASSIFICATION	30

DEFINITIONS

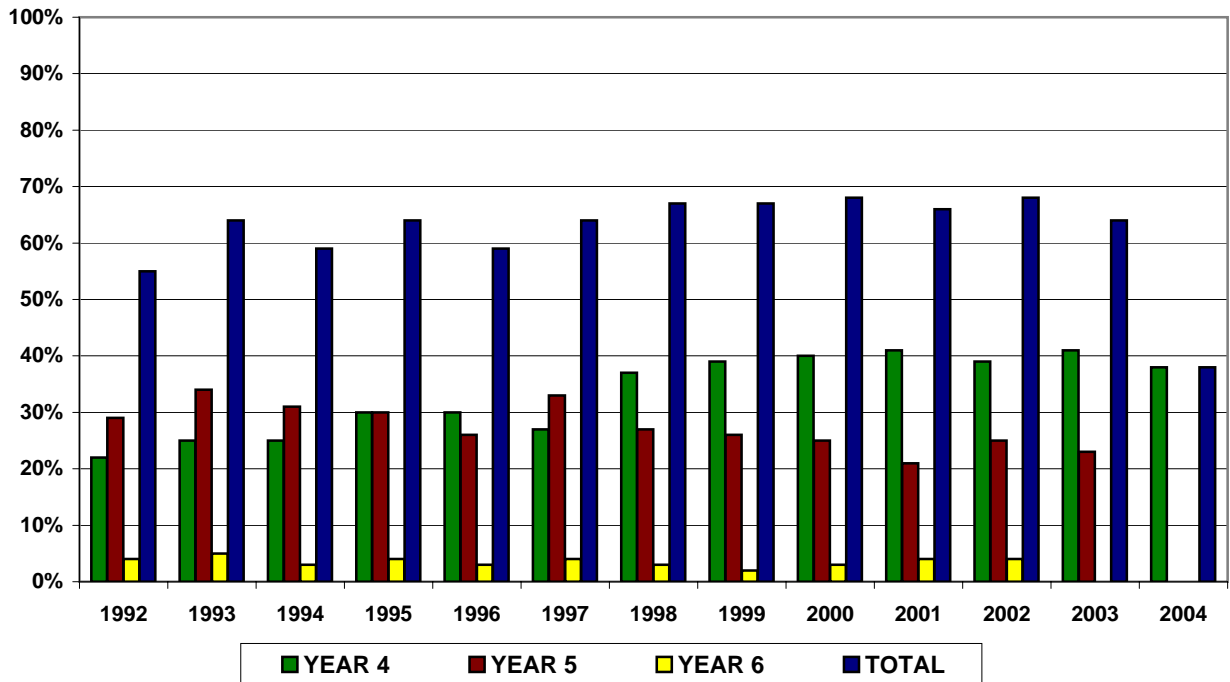
FRESHMAN COHORT – FIRST-TIME, FULL TIME (12 CREDITS) NEW FRESHMEN
 TRANSFER COHORT – FIRST-TIME, FULL TIME (12 CREDITS) NEW TRANSFER
 ALL NEW STUDENT COHORT – FRESHMEN AND TRANSFER COHORTS COMBINED

GRADUATION RATES -- FRESHMAN COHORT

FALL TERM	COHORT	END OF YEAR 4	END OF YEAR 5	END OF YEAR 6	GRADRATE TOTAL
1992	512	22%	29%	4%	55%
1993	500	25%	34%	5%	64%
1994	483	25%	31%	3%	59%
1995	447	30%	30%	4%	64%
1996	557	30%	26%	3%	59%
1997	503	27%	33%	4%	64%
1998	537	37%	27%	3%	67%
1999	558	39%	26%	2%	67%
2000	632	40%	25%	3%	68%
2001	599	41%	21%	4%	66%
2002	564	39%	25%	4%	68%
2003	690	41%	23%		64%
2004	747	38%			38%

Most recent two years do not have a full six-year graduation rate.

TOTAL GRADUATION RATES -- FRESHMAN COHORT



GRADUATION RATES BY GENDER -- FRESHMAN COHORT

GRADUATION RATES -- FRESHMAN COHORT MALES

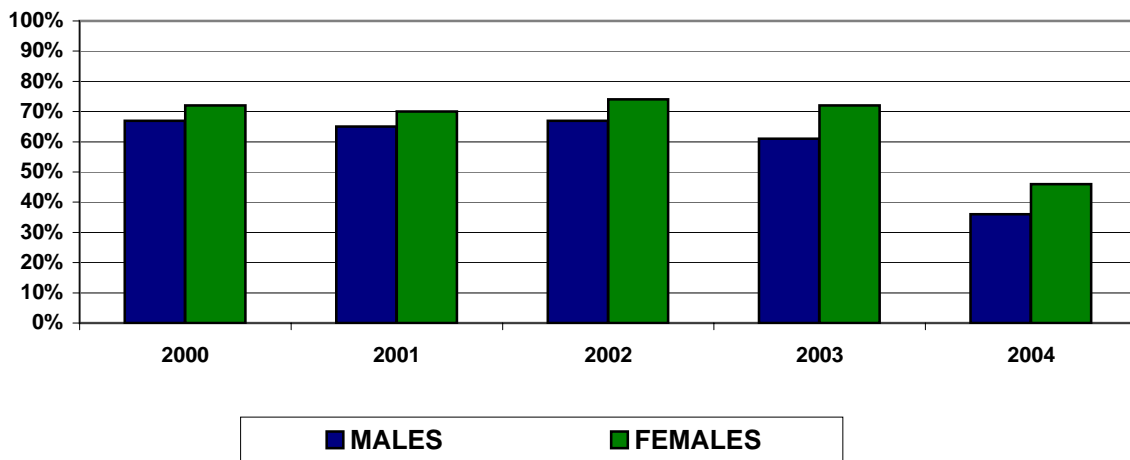
FALL TERM	COHORT	END OF YEAR 4	END OF YEAR 5	END OF YEAR 6	GRADRATE MALES
2000	470	37%	26%	4%	67%
2001	465	36%	25%	4%	65%
2002	433	35%	27%	5%	67%
2003	545	39%	22%		61%
2004	574	36%			36%

GRADUATION RATES -- FRESHMAN COHORT FEMALES

FALL TERM	COHORT	END OF YEAR 4	END OF YEAR 5	END OF YEAR 6	GRADRATE FEMALES
2000	162	49%	23%	0%	72%
2001	134	56%	10%	4%	70%
2002	131	50%	22%	2%	74%
2003	145	47%	25%		72%
2004	173	46%			46%

Last two years do not have a full six-year graduation rate.

COMPARISON BY GENDER



GRADUATION RATES BY ETHNICITY -- FRESHMAN COHORT

GRADUATION RATES -- COMBINED ETHNICITIES -- FRESHMAN COHORT

FALL TERM	COHORT	END OF YEAR 4	END OF YEAR 5	END OF YEAR 6	GRADRATE TOTAL
2000	89	30%	36%	2%	69%
2001	71	31%	31%	4%	66%
2002	91	35%	26%	2%	63%
2003	90	37%	22%		59%
2004	92	29%			29%

GRADUATION RATES -- COMBINED ETHNICITIES MALES -- FRESHMAN COHORT

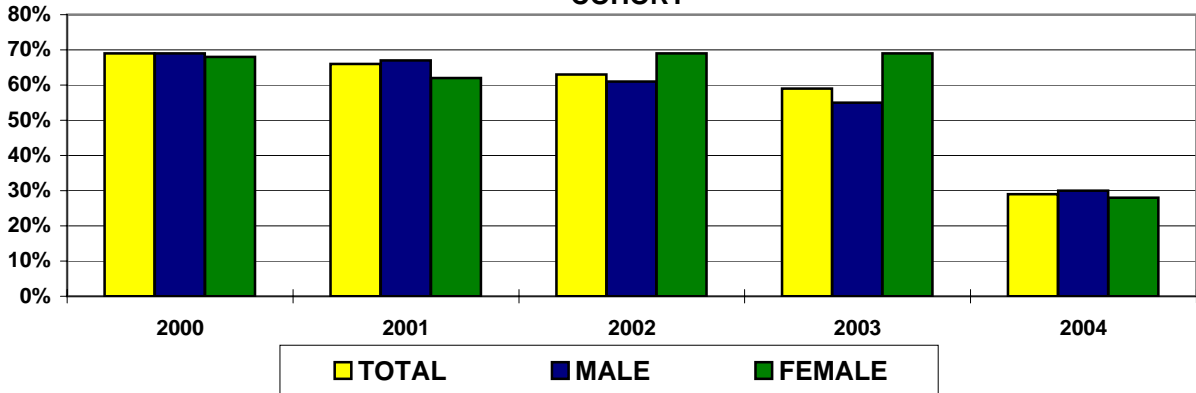
FALL TERM	COHORT	END OF YEAR 4	END OF YEAR 5	END OF YEAR 6	GRADRATE MALE
2000	55	33%	33%	3%	69%
2001	55	27%	37%	3%	67%
2002	62	29%	29%	3%	61%
2003	64	31%	23%		55%
2004	67	30%			30%

GRADUATION RATES COMBINED ETHNICITIES FEMALES -- FRESHMAN COHORT

FALL TERM	COHORT	END OF YEAR 4	END OF YEAR 5	END OF YEAR 6	GRADRATE FEMALE
2000	34	27%	41%	0%	68%
2001	16	44%	12%	6%	62%
2002	29	48%	21%	0%	69%
2003	26	50%	19%		69%
2004	25	28%			28%

Most recent two years do not have a full six year graduation rate.

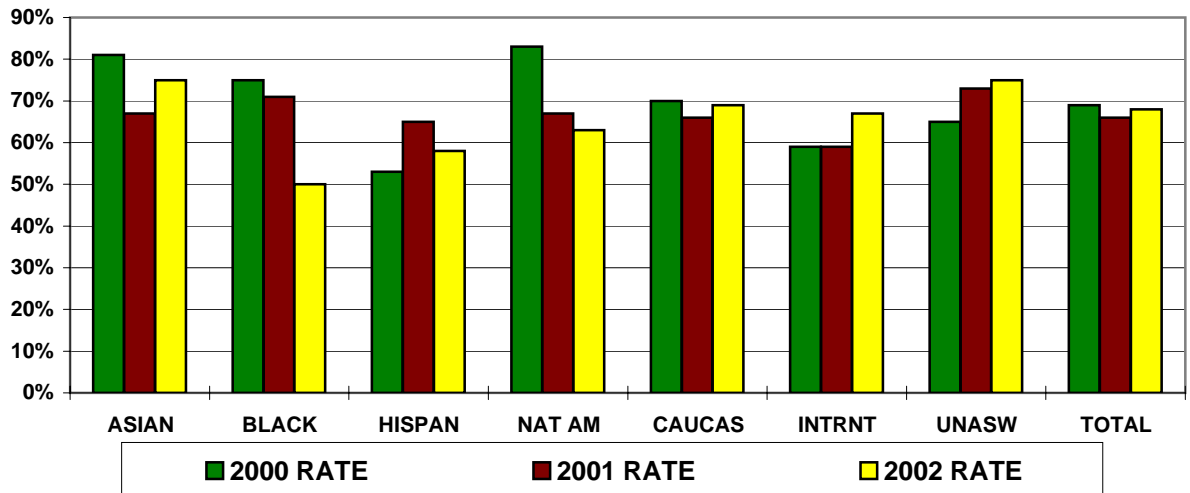
GRADUATION RATES - COMBINED ETHNICITY BY GENDER - FRESHMAN COHORT



GRADUATION RATES -- FRESHMAN COHORT BY ETHNICITY

ETHNICITY	ASIAN	BLACK	HISPAN	NAT AM	CAUCAS	INTRNT	UNASW	TOTAL
2000 COHORT	37	8	38	6	491	29	23	632
2000 RATE	81%	75%	53%	83%	70%	59%	65%	69%
2001 COHORT	30	7	31	3	455	29	44	599
2001 RATE	67%	71%	65%	67%	66%	59%	73%	66%
2002 COHORT	32	8	43	8	436	9	28	564
2002 RATE	75%	50%	58%	63%	69%	67%	75%	68%

GRADUATION RATES BY ETHNICITY



GRADUATION RATES BY ORIGINAL TUITION CLASSIFICATION
FRESHMAN COHORT

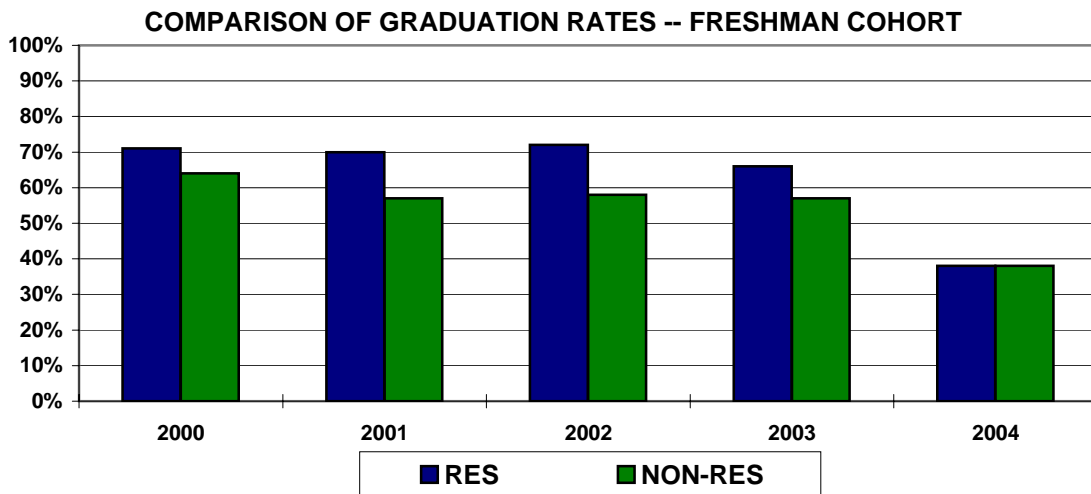
GRADUATION RATES -- RESIDENTS -- FRESHMAN COHORT

FALL TERM	COHORT	END OF YEAR 4	END OF YEAR 5	END OF YEAR 6	GRADRATE RES
2000	436	41%	27%	3%	71%
2001	432	42%	24%	4%	70%
2002	439	42%	26%	4%	72%
2003	525	42%	24%		66%
2004	572	38%			38%

GRADUATION RATES -- NON-RESIDENTS -- FRESHMAN COHORT

FALL TERM	COHORT	END OF YEAR 4	END OF YEAR 5	END OF YEAR 6	GRADRATE NON-RES
2000	196	39%	20%	5%	64%
2001	167	36%	17%	4%	57%
2002	125	28%	24%	6%	58%
2003	165	38%	19%		57%
2004	175	38%			38%

The most recent two years do not have a six-year graduation rate.



GRADUATION RATES BY ORIGINAL MAJOR -- FRESHMAN COHORT

FALL 2000 COHORT	ORIGINAL MAJOR	GRADUATION MAJOR										
		CH	CE	EB	EG	GE	GP	MA	MN	MT	PE	PH
9	CH	1	3		2					1		
78	CE	3	27	1	6	3		2	1	3	2	2
7	EB		2	1	2							
101	EG			2	60		1		1	2	2	4
17	GE				2	6			1		2	
6	GP			1	1		1					
81	MA	1	1	6	8			32			1	1
7	MN				1				5			
5	MT				1					3		
14	PE				1	1					9	
15	PH				2		1	3		1		3
281	UD	1	14	8	120	5	4	17	2	7	8	13

Original Major	Other Majors	Total Grad %
11%	67%	78%
35%	29%	64%
14%	57%	71%
59%	12%	71%
35%	29%	65%
17%	33%	50%
40%	22%	62%
71%	14%	86%
60%	20%	80%
64%	14%	79%
20%	47%	67%
	71%	71%

FALL 2001 COHORT	ORIGINAL MAJOR	GRADUATION MAJOR										
		CH	CE	EB	EG	GE	GP	MA	MN	MT	PE	PH
10	CH	2										
40	CE	1	19	2	2			2	1	2	1	
8	EB		1	2	3					1		
105	EG	1	2	1	59				1	3	2	5
6	GE					3						
11	GP	2			1	1	6					
76	MA	1	2	2	10	1		24	1	1	2	3
9	MN				1				4			
6	MT				1					3		
19	PE										12	
27	PH		1		4	2		1	1	2		6
262	UD	3	19	8	92	1	5	9	7	6	7	20

Original Major	Other Majors	Total Grad %
20%	0%	20%
48%	28%	75%
25%	63%	88%
56%	14%	70%
50%	0%	50%
55%	36%	91%
32%	30%	62%
44%	11%	56%
50%	17%	67%
63%	0%	63%
22%	41%	63%
	68%	68%

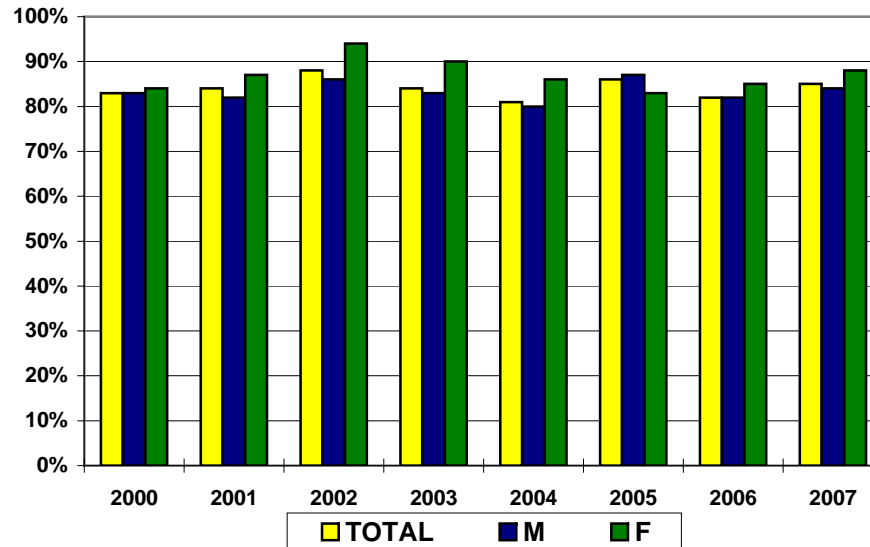
FALL 2002 COHORT	ORIGINAL MAJOR	GRADUATION MAJOR										
		CH	CE	EB	EG	GE	GP	MA	MN	MT	PE	PH
7	CH	2	3									
50	CE	2	17	4	2	1	1			6	2	
11	EB			6	2				2			
140	EG		1	5	64	3	1	1	5	7	2	9
8	GE					4					1	
10	GP					1	5	1	1		1	
51	MA		2	2	7			20			1	3
4	MN				1				1	1		
7	MT									2		
22	PE				3		1	1		1	6	
32	PH	1	2	1	3			4				12
201	UD		11	8	66	4	1	8	5	15	5	16

Original Major	Other Majors	Total Grad %
29%	43%	71%
34%	36%	70%
55%	36%	91%
46%	24%	70%
50%	13%	63%
50%	40%	90%
39%	29%	69%
25%	50%	75%
29%	0%	29%
27%	27%	55%
38%	34%	72%
	69%	69%

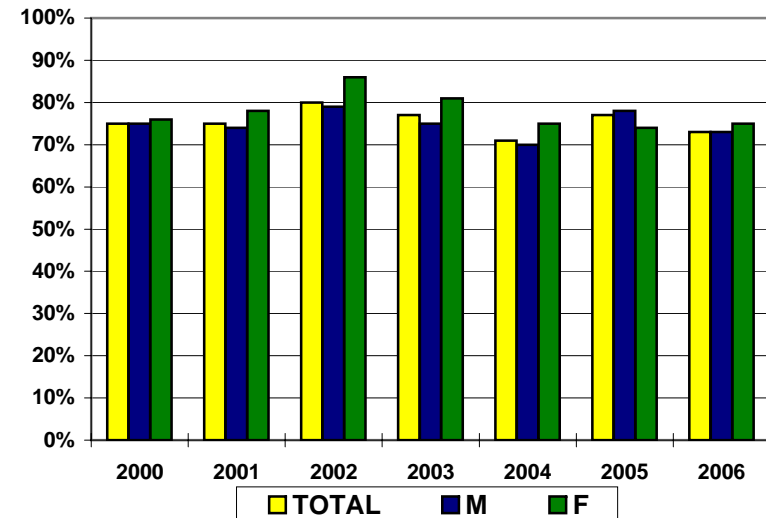
PERSISTENCE RATES -- FRESHMAN COHORT BY GENDER

FALL	COHORT			YEAR 2			YEAR 3			YEAR 4			YEAR 5		
	TOTAL	M	F	TOTAL	M	F	TOTAL	M	F	TOTAL	M	F	TOTAL	M	F
2000	632	470	162	83%	83%	84%	75%	75%	76%	73%	73%	72%	29%	31%	22%
2001	599	465	134	84%	82%	87%	75%	74%	78%	72%	73%	72%	28%	31%	14%
2002	565	434	131	88%	86%	94%	80%	79%	86%	77%	75%	83%	29%	32%	21%
2003	690	545	145	84%	83%	90%	77%	75%	81%	71%	70%	76%	27%	27%	27%
2004	747	574	173	81%	80%	86%	71%	70%	75%	67%	66%	72%	23%	25%	18%
2005	827	667	160	86%	87%	83%	77%	78%	74%	73%	73%	72%			
2006	789	586	185	82%	82%	85%	73%	73%	75%						
2007	780	612	168	85%	84%	88%									

FRESHMAN TO SOPHOMORE PERSISTENCE RATE



SOPHOMORE TO JUNIOR PERSISTENCE RATE



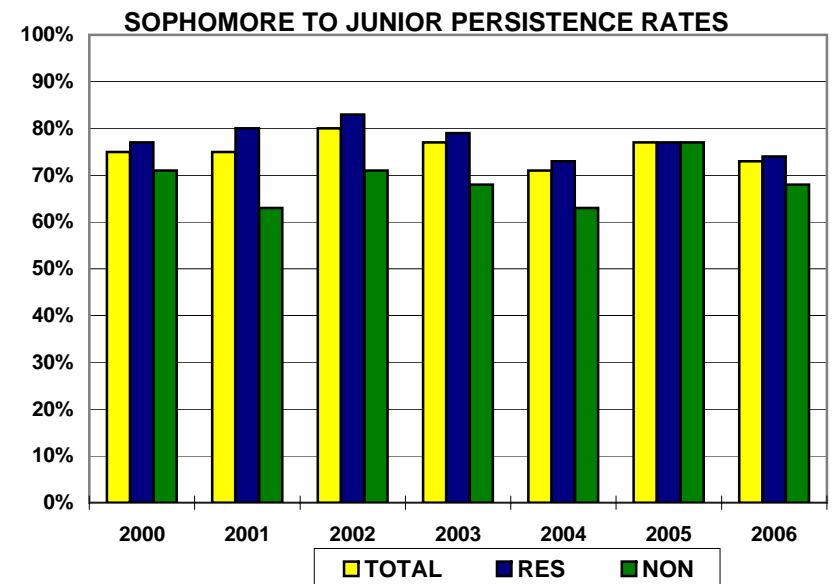
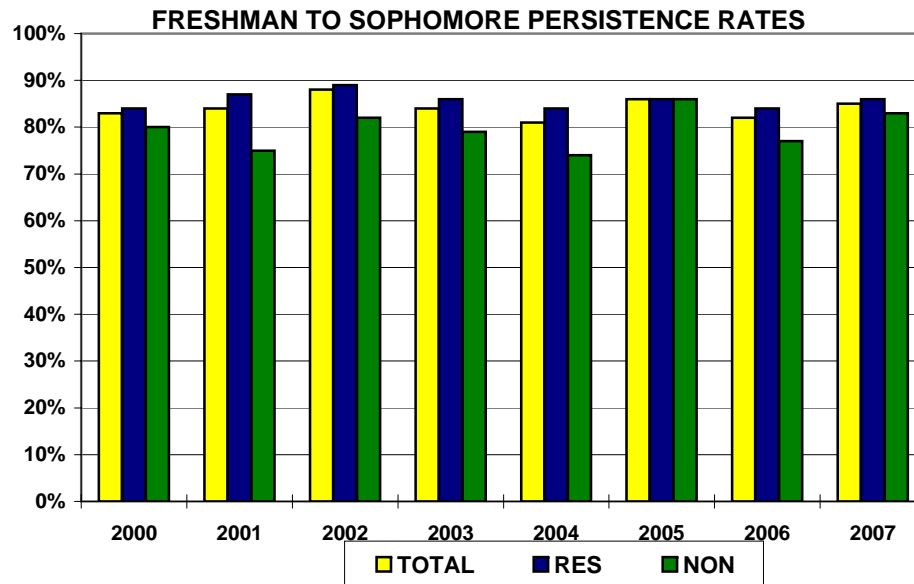
PERSISTENCE RATES BY ETHNICITY -- FRESHMAN COHORT

FALL	COHORT				YEAR 2				YEAR 3				YEAR 4				YEAR 5				
	ASIAN	BLACK	HISP	NAT AM	ASIAN	BLACK	HISP	NAT AM	ASIAN	BLACK	HISP	NAT AM	ASIAN	BLACK	HISP	NAT AM	ASIAN	BLACK	HISP	NAT AM	
2000	37	8	38	6	95%	63%	71%	100%	87%	75%	55%	100%	87%	75%	55%	67%	32%	38%	34%	50%	
2001	30	7	31	3	93%	71%	87%	100%	83%	71%	81%	67%	73%	71%	77%	67%	17%	29%	48%	33%	
2002	32	9	43	8	91%	78%	90%	88%	81%	56%	77%	88%	72%	44%	80%	75%	28%	11%	33%	25%	
2003	30	5	50	5	87%	100%	66%	100%	90%	100%	62%	60%	80%	100%	52%	80%	23%	80%	24%	0%	
2004	39	9	41	3	87%	78%	83%	100%	77%	78%	73%	33%	72%	67%	54%	67%	31%	11%	32%	67%	
2005	35	14	59	9	89%	86%	81%	67%	77%	71%	71%	56%	71%	57%	61%	56%					
2006	36	10	49	15	92%	90%	84%	60%	89%	90%	80%	47%									
2007	36	12	53	3	89%	83%	87%	100%													

FALL	COHORT				YEAR 2				YEAR 3				YEAR 4				YEAR 5			
	ETHNIC COMB	CAUC	INTRN	UNASW	ETHNIC COMB	CAUC	INTRN	UNASW	ETHNIC COMB	CAUC	INTRN	UNASW	ETHNIC COMB	CAUC	INTRN	UNASW	ETHNIC COMB	CAUC	INTRN	UNASW
2000	89	491	29	23	82%	84%	76%	78%	73%	76%	57%	74%	71%	74%	62%	61%	35%	28%	24%	26%
2001	71	455	29	44	89%	84%	72%	82%	80%	75%	55%	80%	75%	72%	62%	75%	32%	26%	17%	39%
2002	92	436	9	28	89%	87%	100%	89%	77%	80%	89%	89%	73%	78%	78%	79%	28%	29%	22%	36%
2003	90	545	15	40	77%	85%	87%	90%	73%	77%	67%	78%	66%	72%	73%	73%	26%	27%	20%	28%
2004	92	591	19	45	85%	81%	84%	82%	74%	70%	68%	78%	63%	67%	68%	73%	30%	22%	11%	31%
2005	117	636	21	53	83%	86%	100%	92%	72%	77%	100%	83%	63%	73%	100%	83%				
2006	110	568	40	71	84%	84%	80%	70%	79%	74%	68%	58%								
2007	104	522	55	99	88%	84%	85%	86%												

PERSISTENCE RATES -- FRESHMAN COHORT BY ORIGINAL TUITION CLASSIFICATION

FALL	COHORT			YEAR 2			YEAR 3			YEAR 4			YEAR 5		
	TOTAL	RES	NON	TOTAL	RES	NON	TOTAL	RES	NON	TOTAL	RES	NON	TOTAL	RES	NON
2000	632	436	196	83%	84%	80%	75%	77%	71%	73%	75%	68%	29%	31%	24%
2001	599	432	167	84%	87%	75%	75%	80%	63%	72%	77%	61%	28%	29%	25%
2002	565	440	125	88%	89%	82%	80%	83%	71%	77%	80%	66%	29%	29%	31%
2003	690	525	165	84%	86%	79%	77%	79%	68%	71%	74%	64%	27%	29%	20%
2004	747	572	175	81%	84%	74%	71%	73%	63%	67%	69%	59%	23%	26%	17%
2005	827	615	212	86%	86%	86%	77%	77%	77%	73%	72%	74%			
2006	789	578	211	82%	84%	77%	73%	74%	68%						
2007	780	551	229	85%	86%	83%									

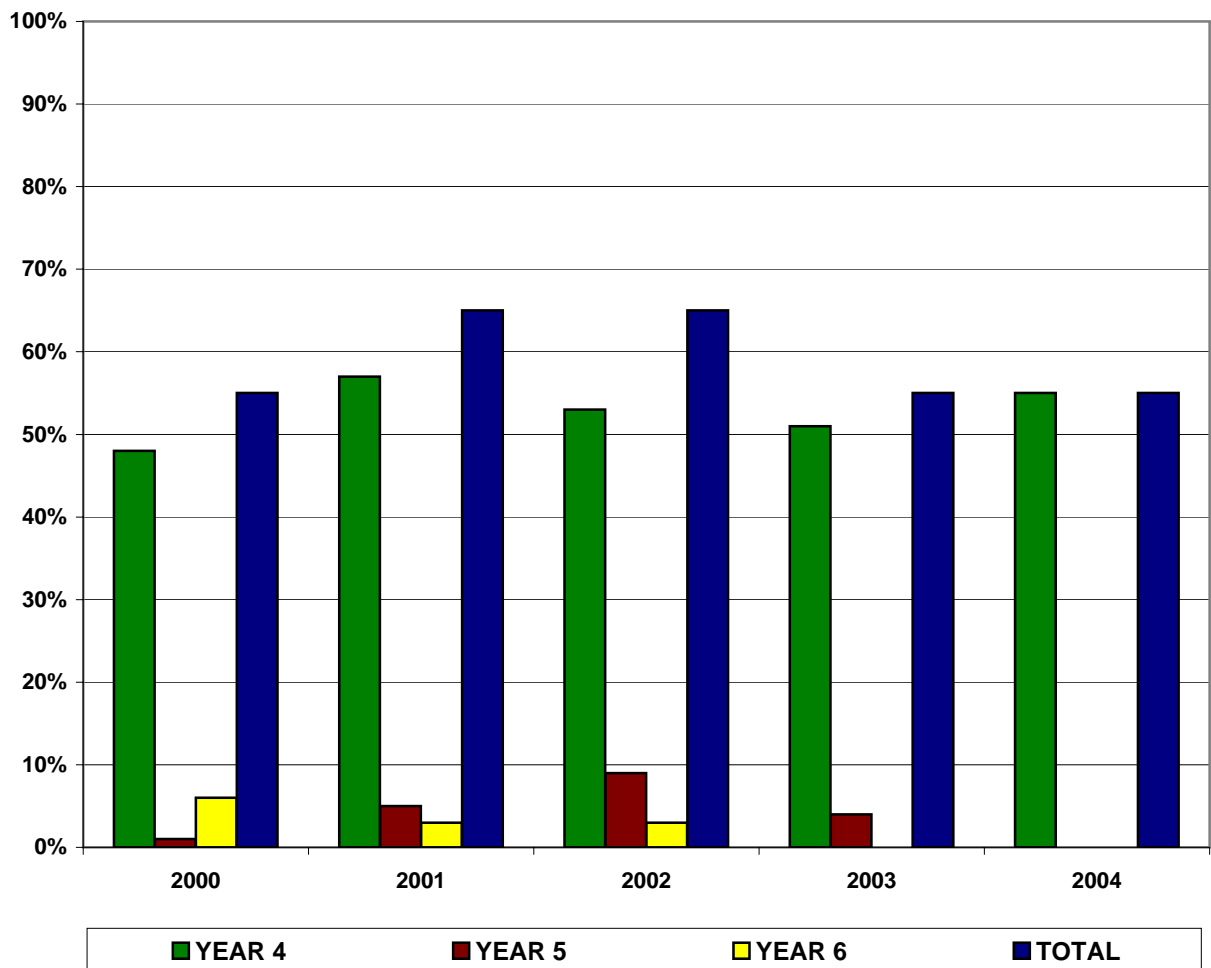


GRADUATION RATES -- TRANSFER COHORT

FALL TERM	COHORT	END OF YEAR 4	END OF YEAR 5	END OF YEAR 6	GRADRATE TOTAL
2000	71	48%	1%	6%	55%
2001	65	57%	5%	3%	65%
2002	64	53%	9%	3%	65%
2003	78	51%	4%		55%
2004	96	55%			55%

Most recent two years do not have a six-year graduation rate.

TOTAL GRADUATION RATES -- TRANSFER COHORT



GRADUATION RATES BY GENDER -- TRANSFER COHORT

GRADUATION RATES -- TRANSFER COHORT MALES

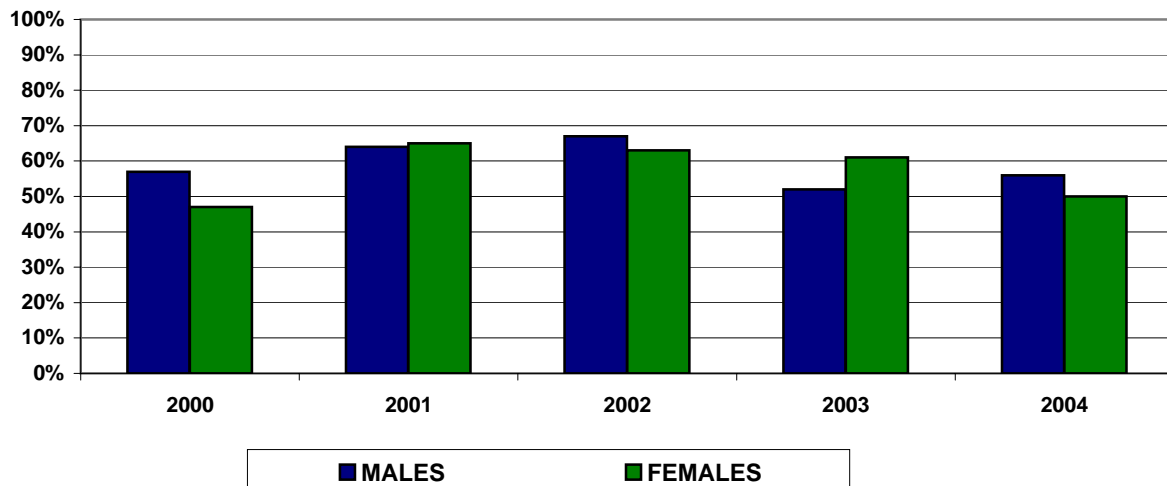
FALL TERM	COHORT	END OF YEAR 4	END OF YEAR 5	END OF YEAR 6	GRADRATE MALES
2000	54	48%	2%	7%	57%
2001	42	52%	8%	4%	64%
2002	48	54%	9%	4%	67%
2003	54	46%	6%		52%
2004	75	56%			56%

GRADUATION RATES -- TRANSFER COHORT FEMALES

FALL TERM	COHORT	END OF YEAR 4	GRADRATE YEAR 5	END OF YEAR 6	GRADRATE FEMALES
2000	17	47%	0%	0%	47%
2001	23	65%	0%	0%	65%
2002	16	50%	13%	0%	63%
2003	23	61%	0%		61%
2004	20	50%			50%

Most recent two years do not have a full six-year graduation rate.

COMPARISON BY GENDER



GRADUATION RATES BY ETHNICITY -- TRANSFER COHORT

GRADUATION RATES -- COMBINED ETHNICITY -- TRANSFER COHORT

FALL TERM	COHORT	END OF YEAR 4	END OF YEAR 5	END OF YEAR 6	GRADRATE TOTAL
2000	11	55%	9%	9%	73%
2001	9	56%	0%	0%	56%
2002	8	50%	13%	13%	76%
2003	15	40%	7%		47%
2004	13	31%			31%

Most recent two years do not have a six-year graduation rate.

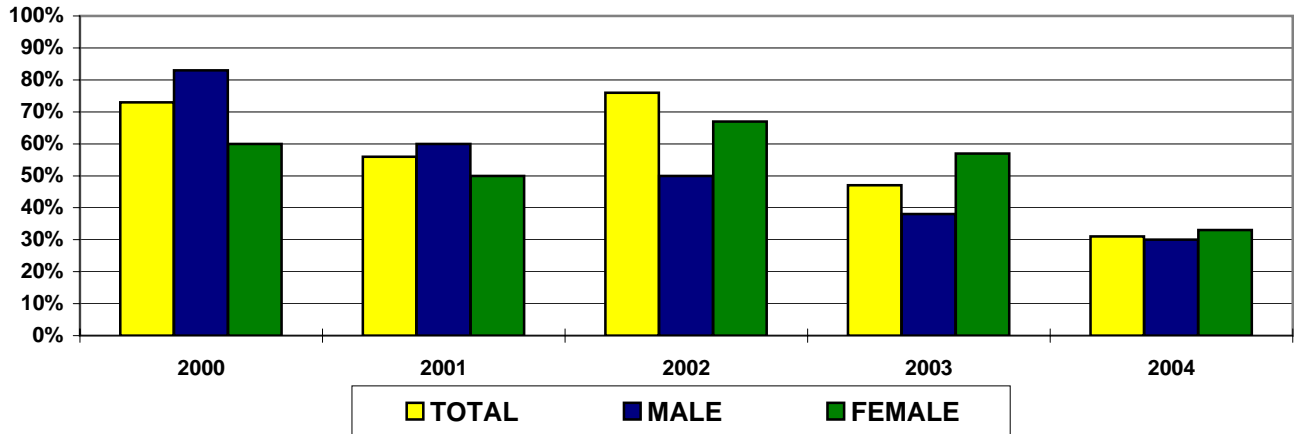
GRADUATION RATES -- COMBINED ETHNICITY MALES -- TRANSFER COHORT

FALL TERM	COHORT	END OF YEAR 4	END OF YEAR 5	END OF YEAR 6	GRADRATE MALE
2000	6	50%	17%	17%	83%
2001	5	60%	0%	0%	60%
2002	2	50%	0%	0%	50%
2003	8	25%	13%		38%
2004	10	30%			30%

GRADUATION RATES COMBINED ETHNICITY FEMALES -- TRANSFER COHORT

FALL TERM	COHORT	END OF YEAR 4	END OF YEAR 5	END OF YEAR 6	GRADRATE FEMALE
2000	5	60%	0%	0%	60%
2001	4	50%	0%	0%	50%
2002	6	50%	17%	0%	67%
2003	7	57%	0%		57%
2004	3	33%			33%

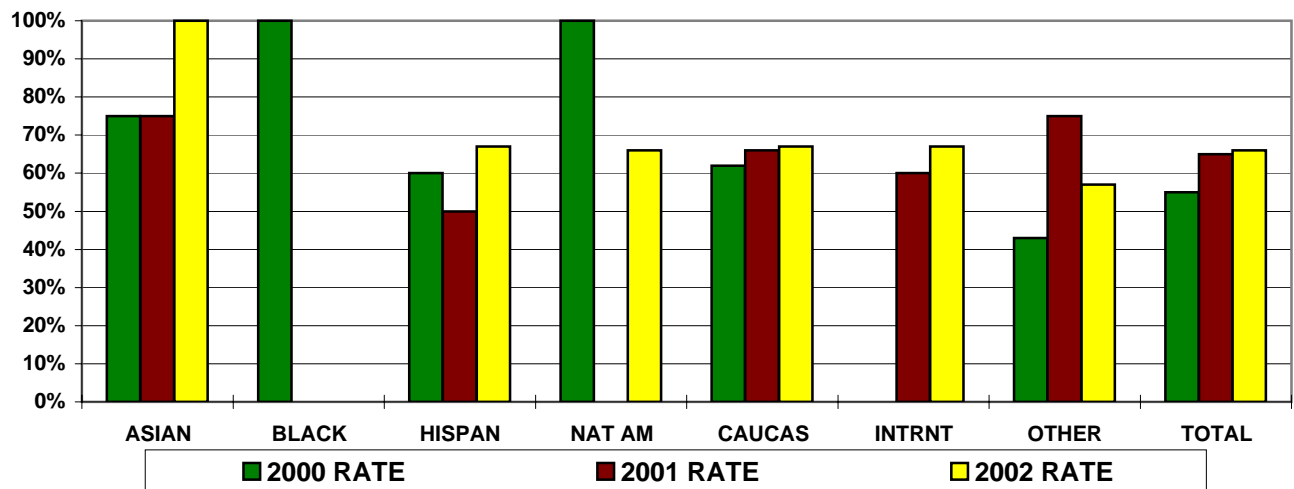
GRADUATION RATES -- COMBINED ETHNICITY BY GENDER -- TRANSFER COHORT



**GRADUATION RATES -- TRANSFER COHORT
BY ETHNICITY -- 6 YEAR GRAD RATE**

ETHNICITY	ASIAN	BLACK	HISPAN	NAT AM	CAUCAS	INTRNT	OTHER	TOTAL
2000 COHORT	4	1	5	1	45	8	7	71
2000 RATE	75%	100%	60%	100%	62%	0%	43%	55%
2001 COHORT	4	1	4	NC	47	5	4	65
2001 RATE	75%	0%	50%	NC	66%	60%	75%	65%
2002 COHORT	1	1	3	3	43	6	7	64
2002 RATE	100%	0%	67%	66%	67%	67%	57%	66%

GRADUATION RATES BY ETHNICITY



GRADUATION RATES BY ORIGINAL TUITION CLASSIFICATION TRANSFER COHORT

GRADUATION RATES -- RESIDENTS -- TRANSFER COHORT

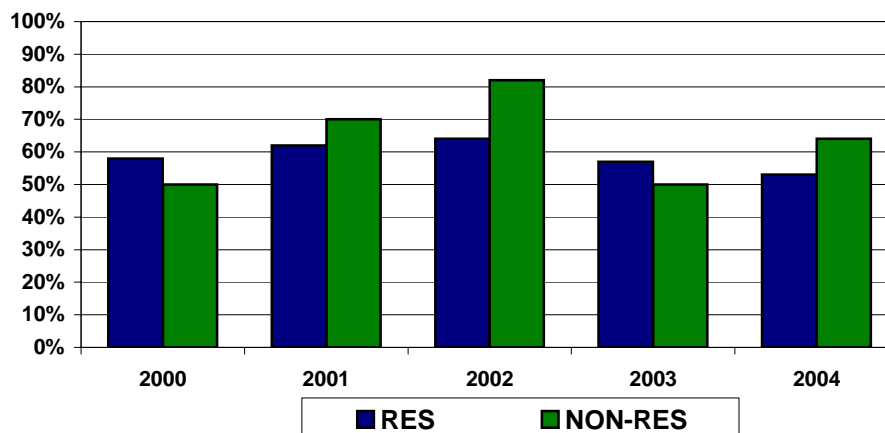
FALL TERM	COHORT	END OF YEAR 4	END OF YEAR 5	END OF YEAR 6	GRADRATE RES
2000	45	49%	2%	7%	58%
2001	45	51%	7%	4%	62%
2002	48	52%	8%	4%	64%
2003	56	52%	5%		57%
2004	74	53%			53%

Most recent two years do not have a full six-year graduation rate.

GRADUATION RATES -- NON-RESIDENTS -- TRANSFER COHORT

FALL TERM	COHORT	END OF YEAR 4	END OF YEAR 5	END OF YEAR 6	GRADRATE NON-RES
2000	26	46%	0%	4%	50%
2001	20	70%	0%	0%	70%
2002	16	56%	13%	13%	82%
2003	22	50%	0%		50%
2004	22	64%			64%

COMPARISON OF GRADUATION RATES -- TRANSFER COHORT



GRADUATION RATES BY ORIGINAL MAJOR -- TRANSFER COHORT

FALL 2000 COHORT	ORIGINAL MAJOR	GRADUATION MAJOR											Original Major	Other Majors	Total Grad %		
		CH	CE	EB	EG	GE	GP	MA	MN	MT	PE	PH					
5	CH	1		1											20%	20%	40%
9	CE	1	3		1										33%	22%	56%
2	EB			2											0%	100%	100%
20	EG				12			1				1			60%	10%	70%
1	GE					1									100%	0%	100%
2	GP														0%	0%	0%
3	MA							1							33%	0%	33%
0	MN														N/A	N/A	N/A
5	MT				1						1				20%	20%	40%
1	PE											1			100%	0%	100%
4	PH							1							25%	25%	50%
17	UD	1	1		5					1						47%	47%

FALL 2001 COHORT	ORIGINAL MAJOR	GRADUATION MAJOR											Original Major	Other Majors	Total Grad %		
		CH	CE	EB	EG	GE	GP	MA	MN	MT	PE	PH					
0	CH														N/A	N/A	N/A
7	CE	1	4												57%	14%	71%
2	EB														0%	0%	0%
15	EG				7								1		47%	7%	53%
4	GE					4									100%	0%	100%
1	GP						1								100%	0%	100%
10	MA				1			4							40%	10%	50%
2	MN							1							50%	0%	50%
2	MT									2					100%	0%	100%
4	PE		1									3			75%	25%	100%
2	PH												2		100%	0%	100%
16	UD	2			7			1								63%	63%

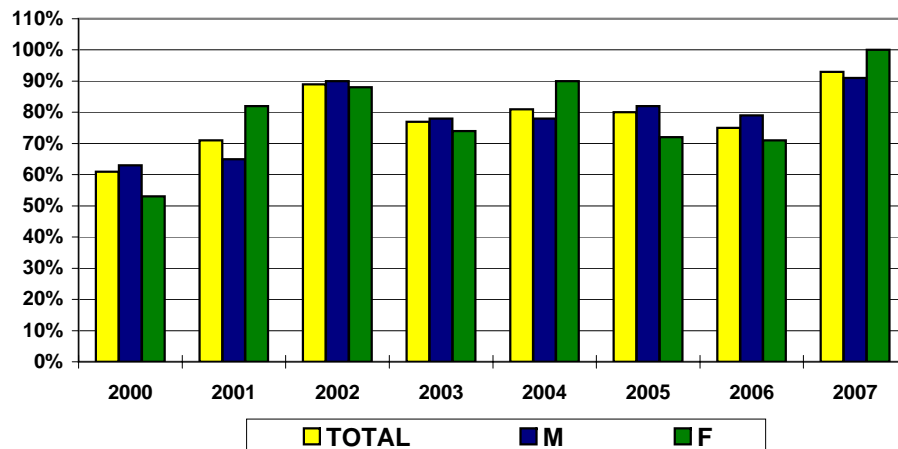
FALL 2002 COHORT	ORIGINAL MAJOR	GRADUATION MAJOR											Original Major	Other Majors	Total Grad %		
		CH	CE	EB	EG	GE	GP	MA	MN	MT	PE	PH					
0	CH														N/A	N/A	N/A
3	CE		2												67%	0%	67%
1	EB														0%	0%	0%
25	EG				19	1									76%	4%	80%
1	GE														0%	0%	0%
2	GP						1								50%	0%	50%
10	MA					1		4							40%	10%	50%
2	MN								2						0%	100%	100%
3	MT									1					33%	0%	33%
2	PE											2			100%	0%	100%
6	PH				1										50%	17%	67%
7	UD				3	1										57%	57%

PERSISTENCE RATES -- TRANSFER COHORT BY GENDER

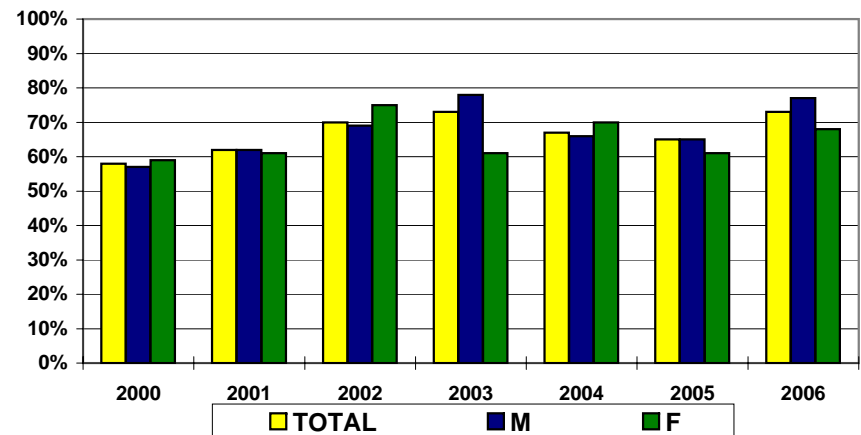
FALL	COHORT			YEAR 2			YEAR 3			YEAR 4			YEAR 5		
	TOTAL	M	F	TOTAL	M	F	TOTAL	M	F	TOTAL	M	F	TOTAL	M	F
2000	71	54	17	61%	63%	53%	58%	57%	59%	30%	28%	35%	4%	4%	6%
2001	65	43	22	71%	65%	82%	62%	62%	61%	31%	31%	30%	8%	10%	4%
2002	64	48	16	89%	90%	88%	70%	69%	75%	45%	46%	44%	13%	15%	6%
2003	78*	54	23	77%	78%	74%	73%	78%	61%	36%	35%	39%	8%	7%	9%
2004	98*	77	20	81%	78%	90%	67%	66%	70%	39%	36%	45%	9%	8%	15%
2005	90*	71	18	80%	82%	72%	65%	65%	61%	17%	14%	28%			
2006	81*	48	28	75%	79%	71%	73%	77%	68%						
2007	73	56	17	93%	91%	100%									

* Select records in the dataset do not report gender.

FRESHMEN TO SOPHOMORE PERSISTENCE RATE



SOPHOMORE TO JUNIOR PERSISTENCE RATE



PERSISTENCE RATES BY ETHNICITY -- TRANSFER COHORT

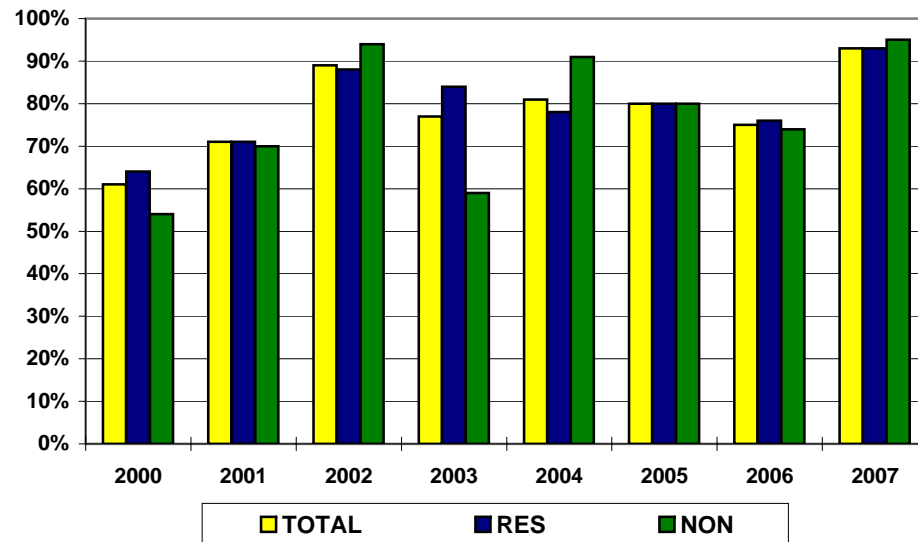
FALL	COHORT				YEAR 2				YEAR 3				YEAR 4				YEAR 5			
	ASIAN	BLACK	HISP	NAT AM	ASIAN	BLACK	HISP	NAT AM	ASIAN	BLACK	HISP	NAT AM	ASIAN	BLACK	HISP	NAT AM	ASIAN	BLACK	HISP	NAT AM
2000	4	1	5	1	75%	100%	60%	100%	75%	100%	60%	100%	50%	0%	40%	100%	0%	0%	0%	0%
2001	4	1	4	0	75%	100%	75%	0%	75%	100%	50%	0%	25%	0%	25%	0%	0%	0%	0%	0%
2002	1	1	3	3	100%	100%	100%	100%	100%	100%	100%	67%	100%	100%	67%	33%	0%	0%	0%	33%
2003	6	3	5	1	50%	100%	80%	0%	50%	100%	80%	0%	33%	67%	40%	0%	17%	0%	20%	0%
2004	5	2	6	0	60%	100%	83%	0%	80%	100%	67%	0%	40%	0%	50%	0%	20%	0%	17%	0%
2005	5	1	2	1	80%	100%	50%	100%	60%	100%	50%	100%	0%	0%	0%	0%				
2006	3	2	3	1	100%	50%	100%	100%	100%	50%	67%	0%								
2007	2	4	1	2	100%	100%	100%	100%												

FALL	COHORT				YEAR 2				YEAR 3				YEAR 4				YEAR 5			
	ETHNIC COMB	CAUC	INTRN	UNASW	ETHNIC COMB	CAUC	INTRN	UNASW	ETHNIC COMB	CAUC	INTRN	UNASW	ETHNIC COMB	CAUC	INTRN	UNASW	ETHNIC COMB	CAUC	INTRN	UNASW
2000	11	45	8	7	73%	73%	0%	29%	72%	67%	0%	43%	45%	31%	0%	29%	0%	7%	0%	0%
2001	9	46	5	5	77%	74%	20%	80%	67%	64%	40%	50%	22%	32%	20%	50%	0%	11%	0%	0%
2002	8	43	6	7	100%	86%	83%	100%	88%	67%	50%	86%	63%	47%	33%	29%	13%	14%	0%	14%
2003	15	52	5	6	67%	77%	80%	100%	67%	71%	100%	83%	40%	35%	40%	33%	13%	8%	0%	0%
2004	13	72	3	10	77%	81%	100%	80%	77%	65%	67%	70%	38%	39%	0%	50%	15%	8%	0%	10%
2005	9	64	2	15	78%	80%	100%	80%	67%	61%	100%	73%	67%	19%	50%	13%				
2006	9	53	12	7	89%	70%	92%	71%	67%	68%	100%	71%								
2007	9	50	6	8	100%	94%	100%	75%												

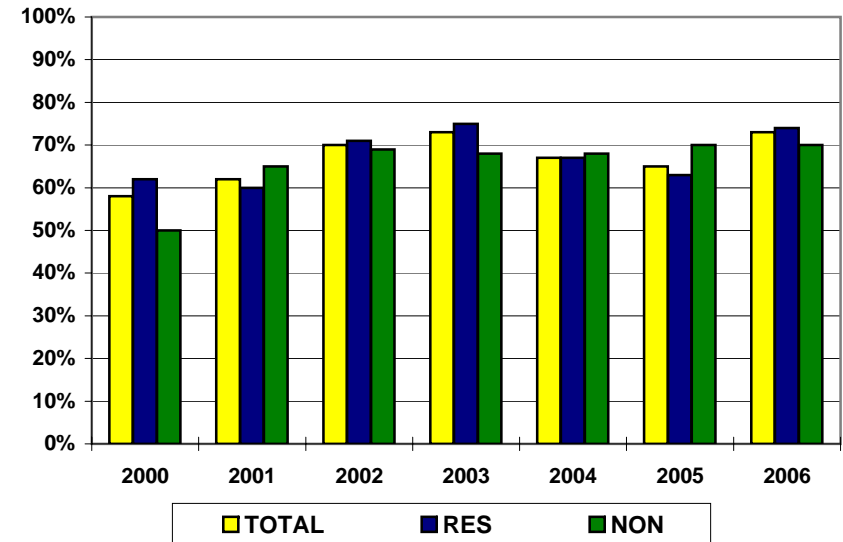
PERSISTENCE RATES -- TRANSFER COHORT BY ORIGINAL TUITION CLASSIFICATION

FALL	COHORT			YEAR 2			YEAR 3			YEAR 4			YEAR 5		
	TOTAL	RES	NON	TOTAL	RES	NON	TOTAL	RES	NON	TOTAL	RES	NON	TOTAL	RES	NON
2000	71	45	26	61%	64%	54%	58%	62%	50%	30%	36%	19%	4%	7%	0%
2001	65	45	20	71%	71%	70%	62%	60%	65%	31%	33%	25%	8%	11%	0%
2002	64	48	16	89%	88%	94%	70%	71%	69%	45%	44%	50%	13%	13%	13%
2003	78	56	22	77%	84%	59%	73%	75%	68%	36%	39%	27%	8%	11%	0%
2004	98	76	22	81%	78%	91%	67%	67%	68%	39%	42%	27%	9%	11%	5%
2005	90	70	20	80%	80%	80%	65%	63%	70%	17%	17%	15%			
2006	81	58	23	75%	76%	74%	73%	74%	70%						
2007	73	54	19	93%	93%	95%									

FRESHMAN TO SOPHOMORE PERSISTENCE RATES



SOPHOMORE TO JUNIOR PERSISTENCE RATES

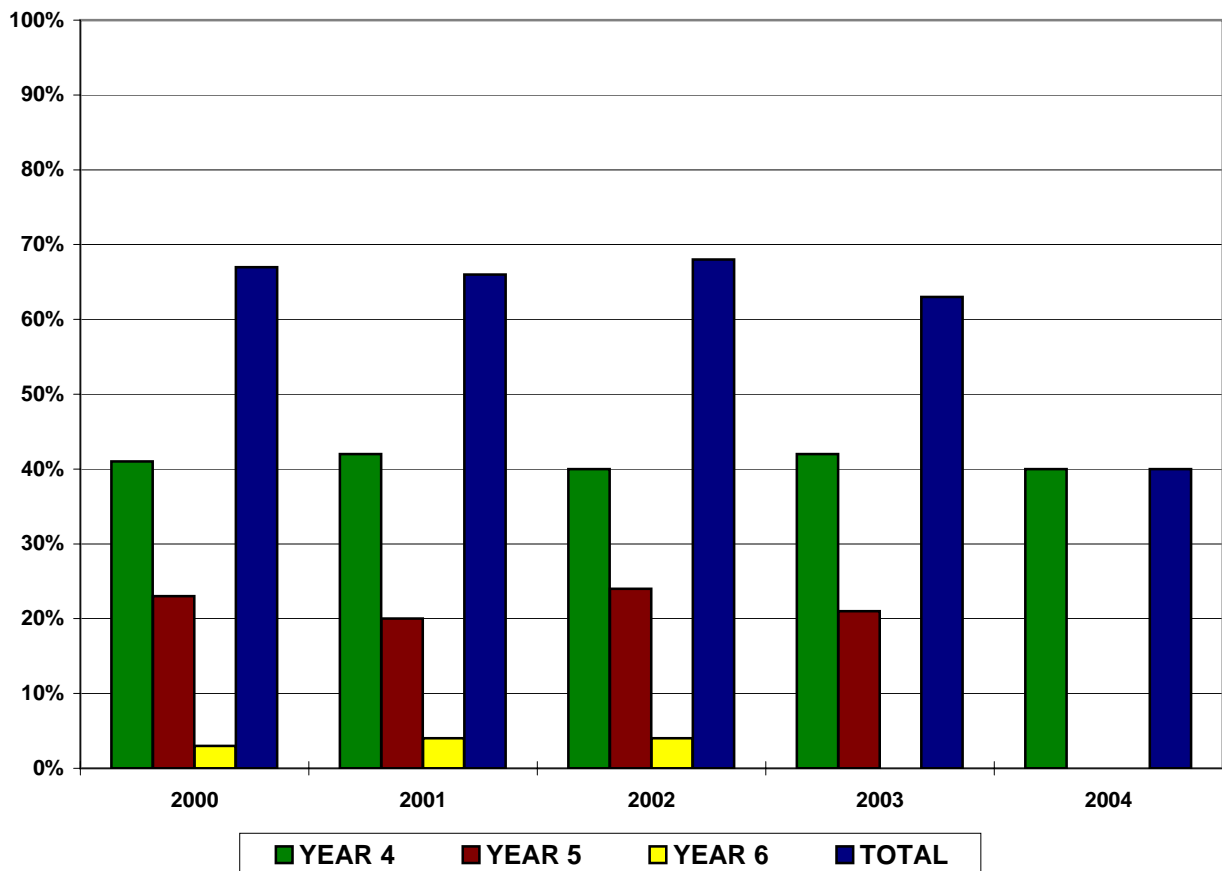


GRADUATION RATES -- ALL NEW COHORT

FALL TERM	COHORT	END OF YEAR 4	END OF YEAR 5	END OF YEAR 6	GRADRATE TOTAL
2000	703	41%	23%	3%	67%
2001	664	42%	20%	4%	66%
2002	628	40%	24%	4%	68%
2003	768	42%	21%		63%
2004	843	40%			40%

The most recent two years do not have a full six-year graduation rate.

TOTAL GRADUATION RATES -- ALL NEW COHORT



GRADUATION RATES BY GENDER -- ALL NEW COHORT

GRADUATION RATES -- ALL NEW COHORT MALES

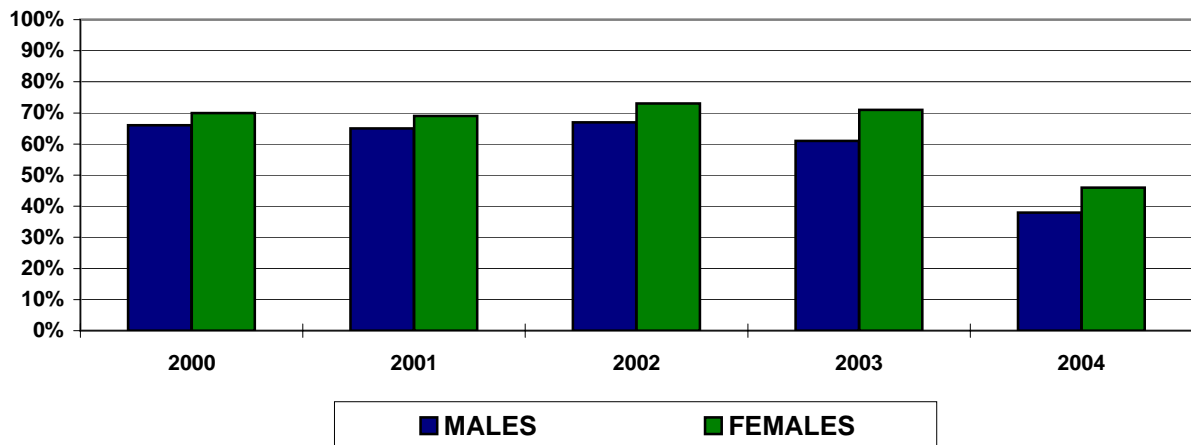
FALL TERM	COHORT	END OF YEAR 4	END OF YEAR 5	END OF YEAR 6	GRADRATE MALES
2000	524	38%	23%	5%	66%
2001	507	38%	23%	4%	65%
2002	481	37%	25%	5%	67%
2003	599	40%	21%		61%
2004	649	38%			38%

GRADUATION RATES -- ALL NEW COHORT FEMALES

FALL TERM	COHORT	END OF YEAR 4	END OF YEAR 5	END OF YEAR 6	GRADRATE FEMALES
2000	179	49%	21%	0%	70%
2001	157	57%	9%	3%	69%
2002	147	50%	21%	2%	73%
2003	168	49%	22%		71%
2004	193	46%			46%

The most recent two years do not have a full six-year graduation rate.

COMPARISON BY GENDER



GRADUATION RATES BY ETHNICITY -- ALL NEW COHORT

GRADUATION RATES -- COMBINED ETHNICITY -- ALL NEW COHORT

FALL TERM	COHORT	END OF YEAR 4	END OF YEAR 5	END OF YEAR 6	GRADRATE TOTAL
2000	100	33%	33%	3%	69%
2001	80	34%	27%	4%	65%
2002	99	36%	26%	2%	64%
2003	105	37%	2%		39%
2004	105	30%			30%

GRADUATION RATES -- COMBINED ETHNICITY MALES -- ALL NEW COHORT

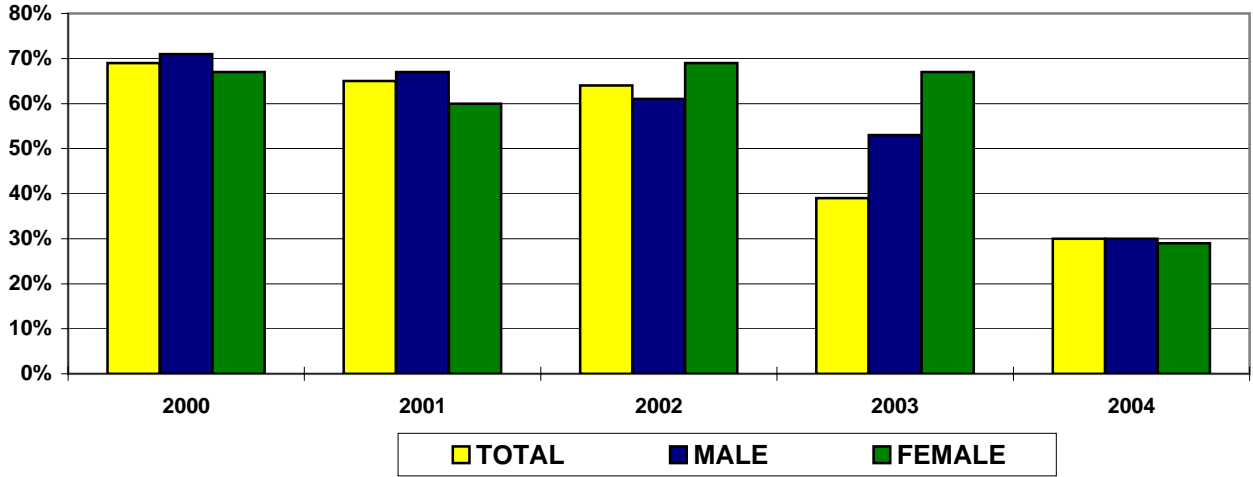
FALL TERM	COHORT	END OF YEAR 4	END OF YEAR 5	END OF YEAR 6	GRADRATE MALE
2000	61	35%	31%	5%	71%
2001	60	30%	33%	4%	67%
2002	64	30%	28%	3%	61%
2003	72	31%	22%		53%
2004	77	30%			30%

GRADUATION RATES COMBINED ETHNICITY FEMALES -- ALL NEW COHORT

FALL TERM	COHORT	END OF YEAR 4	END OF YEAR 5	END OF YEAR 6	GRADRATE FEMALE
2000	39	31%	36%	0%	67%
2001	20	45%	10%	5%	60%
2002	35	49%	20%	0%	69%
2003	33	52%	15%		67%
2004	28	29%			29%

The most recent two years do not have a six-year graduation rate.

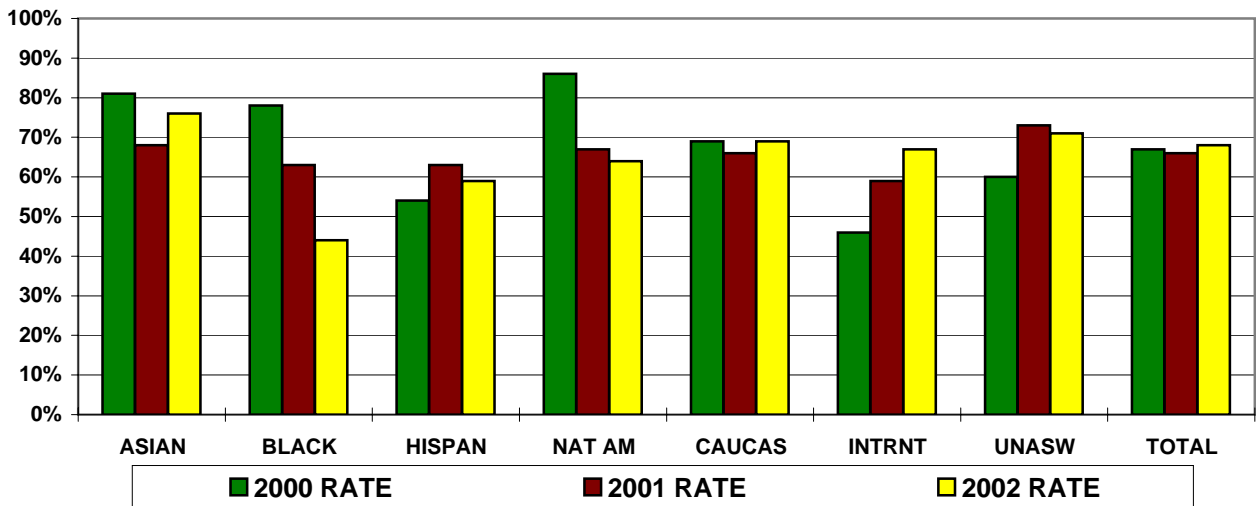
GRADUATION RATES -- COMBINED ETHNICITY BY GENDER -- ALL NEW COHORT



GRADUATION RATES -- ALL NEW COHORT
BY ETHNICITY

ETHNICITY	ASIAN	BLACK	HISPAN	NAT AM	CAUCAS	INTRNT	UNASW	TOTAL
2000 COHORT	41	9	43	7	536	37	30	703
2000 RATE	81%	78%	54%	86%	69%	46%	60%	67%
2001 COHORT	34	8	35	3	502	34	48	664
2001 RATE	68%	63%	63%	67%	66%	59%	73%	66%
2002 COHORT	33	9	46	11	479	15	35	628
2002 RATE	76%	44%	59%	64%	69%	67%	71%	68%

GRADUATION RATES BY ETHNICITY



GRADUATION RATES BY ORIGINAL TUITION CLASSIFICATION ALL NEW COHORT

GRADUATION RATES -- RESIDENTS -- ALL NEW COHORT

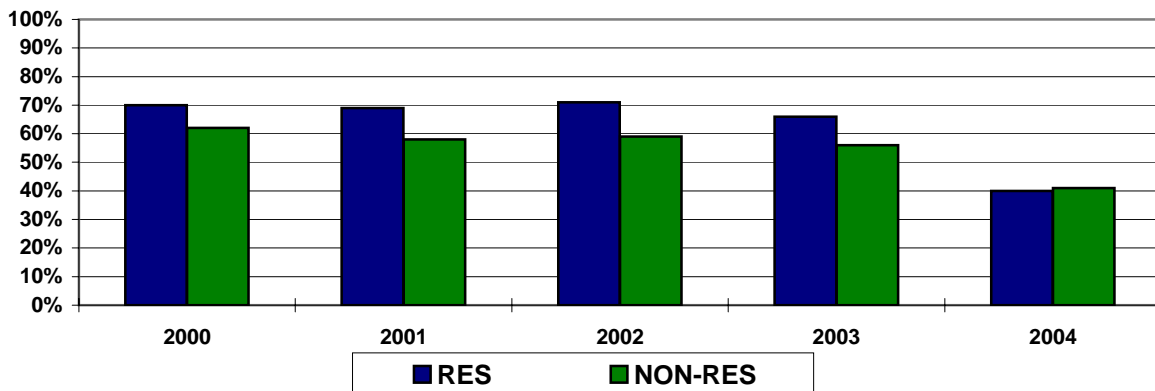
FALL TERM	COHORT	END OF YEAR 4	END OF YEAR 5	END OF YEAR 6	GRADRATE RES
2000	481	42%	25%	3%	70%
2001	477	43%	22%	4%	69%
2002	487	43%	24%	4%	71%
2003	581	43%	23%		66%
2004	646	40%			40%

GRADUATION RATES -- NON-RESIDENTS -- ALL NEW COHORT

FALL TERM	COHORT	END OF YEAR 4	END OF YEAR 5	END OF YEAR 6	GRADRATE NON-RES
2000	222	40%	17%	5%	62%
2001	187	40%	15%	3%	58%
2002	141	31%	23%	5%	59%
2003	187	39%	17%		56%
2004	197	41%			41%

Most recent two years do not have a full six-year graduation rate.

COMPARISON OF GRADUATION RATES -- ALL NEW COHORT



GRADUATION RATES BY ORIGINAL MAJOR -- ALL NEW COHORT

FALL 2000 COHORT	ORIGINAL MAJOR	GRADUATION MAJOR										
		CH	CE	EB	EG	GE	GP	MA	MN	MT	PE	PH
14	CH	2	3	1	2						1	
87	CE	4	30	1	7	3		2	1	3	2	2
9	EB		2	3	2							
121	EG			2	72		1	1	1	2	3	4
18	GE				2	7			1		2	
8	GP			1	1		1					
84	MA	1	1	6	8			33			1	1
7	MN				1				5			
10	MT				2					4		
15	PE				1	1					10	
19	PH				2		2	3		1		4
298	UD	2	15	8	125	5	4	17	3	7	8	13

Original Major	Other Majors	Total Grad%
14.3%	50.0%	64.3%
34.5%	28.7%	63.2%
33.3%	44.4%	77.8%
59.5%	11.6%	71.1%
38.9%	27.8%	66.7%
12.5%	25.0%	37.5%
39.3%	21.4%	60.7%
71.4%	14.3%	85.7%
40.0%	20.0%	60.0%
66.7%	13.3%	80.0%
21.1%	42.1%	63.2%
4.4%	69.5%	69.5%

FALL 2001 COHORT	ORIGINAL MAJOR	GRADUATION MAJOR										
		CH	CE	EB	EG	GE	GP	MA	MN	MT	PE	PH
10	CH	2										
47	CE	2	23	2	2			2	1	2	1	
10	EB		1	2	3					1		
120	EG	1	2	1	66				1	3	2	6
10	GE					7						
12	GP	2			1	1	7					
86	MA	1	2	2	11	1		28	1	1	2	3
11	MN				1			1	4			
8	MT				1					5		
23	PE		1								15	
29	PH		1		4	2		1	1	2		8
278	UD	5	19	8	99	1	5	10	7	6	7	20

Original Major	Other Majors	Total Grad %
20.0%	0.0%	20.0%
48.9%	25.5%	74.5%
20.0%	50.0%	70.0%
55.0%	13.3%	68.3%
70.0%	0.0%	70.0%
58.3%	33.3%	91.7%
32.6%	27.9%	60.5%
36.4%	18.2%	54.5%
62.5%	12.5%	75.0%
65.2%	4.3%	69.6%
27.6%	37.9%	65.5%
7.2%	67.3%	67.3%

FALL 2002 COHORT	ORIGINAL MAJOR	GRADUATION MAJOR										
		CH	CE	EB	EG	GE	GP	MA	MN	MT	PE	PH
7	CH	2	3									
53	CE	2	19	4	2	1	1			6	2	
12	EB			6	2				2			
165	EG		1	5	83	3	2	1	5	7	2	9
9	GE					4					1	
12	GP					1	6	1	1		1	
61	MA		2	2	8			24			1	3
6	MN				1				3	1		
10	MT									3		
24	PE				3		1	1		1	8	
38	PH	1	2	1	4			4				15
208	UD		0	8	69	4	2	8	5	15	5	16

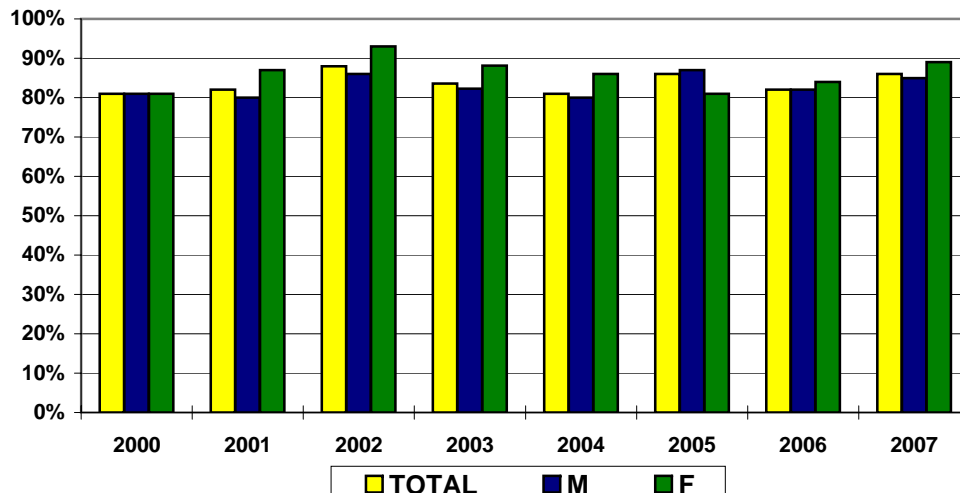
Original Major	Other Majors	Total Grad %
28.6%	42.9%	71.4%
35.8%	34.0%	69.8%
50.0%	33.3%	83.3%
50.3%	21.2%	71.5%
44.4%	11.1%	55.6%
50.0%	33.3%	83.3%
39.3%	26.2%	65.6%
50.0%	33.3%	83.3%
30.0%	0.0%	30.0%
33.3%	25.0%	58.3%
39.5%	31.6%	71.1%
7.7%	63.5%	63.5%

PERSISTENCE RATES -- ALL NEW COHORT BY GENDER

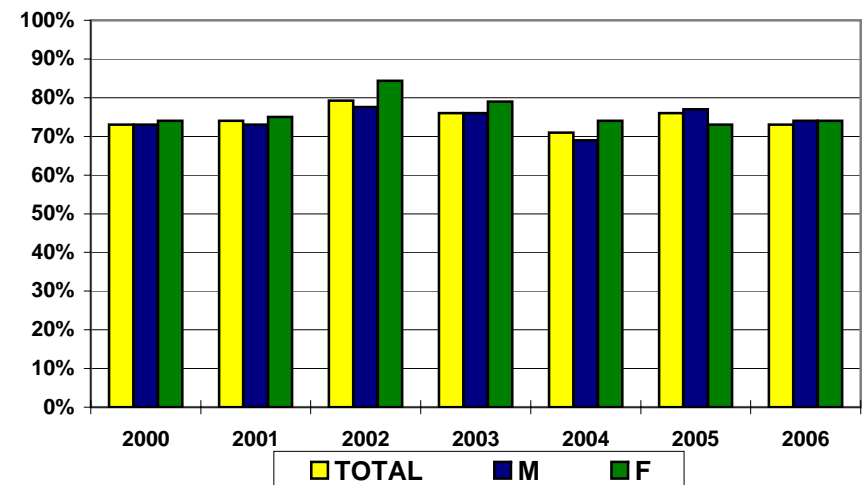
FALL	COHORT			YEAR 2			YEAR 3			YEAR 4			YEAR 5		
	TOTAL	M	F	TOTAL	M	F	TOTAL	M	F	TOTAL	M	F	TOTAL	M	F
2000	703	524	179	81%	81%	81%	73%	73%	74%	68%	68%	69%	26%	28%	20%
2001	664	508	156	82%	80%	87%	74%	73%	75%	68%	69%	66%	26%	30%	13%
2002	629	482	147	88%	86%	93%	79%	78%	84%	74%	72%	79%	28%	30%	20%
2003	768*	599	168	84%	82%	88%	76%	76%	79%	68%	67%	71%	25%	25%	24%
2004	845*	651	193	81%	80%	86%	71%	69%	74%	64%	62%	69%	23%	23%	18%
2005	917*	738	178	86%	87%	81%	76%	77%	73%	67%	67%	67%			
2006	870	634	213	82%	82%	84%	73%	74%	74%						
2007	853	668	185	86%	85%	89%									

*Select records in the data set do not report gender.

FRESHMAN TO SOPHOMORE PERSISTENCE RATE



SOPHOMORE TO JUNIOR PERSISTENCE RATE



PERSISTENCE RATES BY ETHNICITY -- ALL NEW COHORT

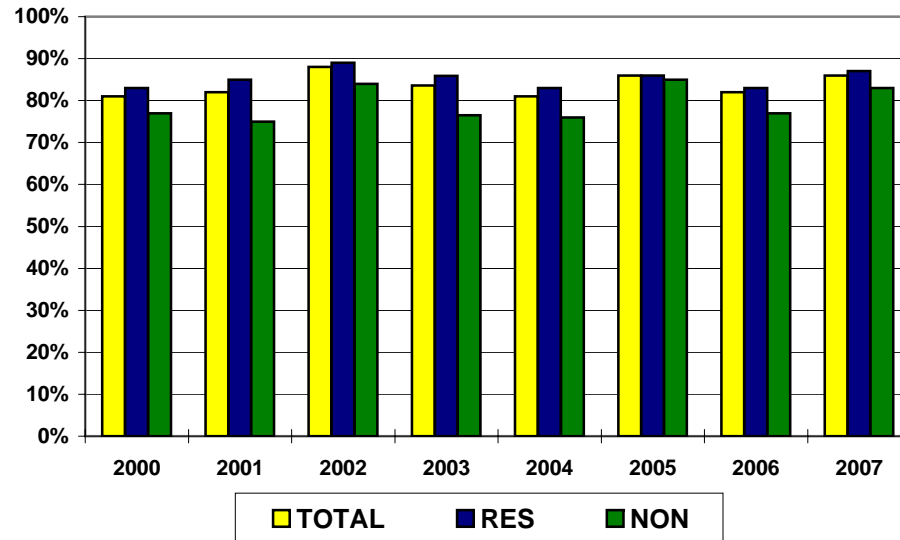
FALL	COHORT				YEAR 2				YEAR 3				YEAR 4				YEAR 5			
	ASIAN	BLACK	HISP	NAT AM	ASIAN	BLACK	HISP	NAT AM	ASIAN	BLACK	HISP	NAT AM	ASIAN	BLACK	HISP	NAT AM	ASIAN	BLACK	HISP	NAT AM
2000	41	9	43	7	93%	67%	70%	100%	85%	78%	56%	100%	83%	67%	53%	71%	29%	33%	30%	43%
2001	34	8	35	3	91%	75%	86%	100%	82%	75%	77%	67%	68%	63%	71%	67%	15%	25%	43%	33%
2002	33	10	46	11	91%	80%	91%	91%	82%	60%	79%	82%	73%	50%	78%	64%	27%	10%	30%	27%
2003	36	8	55	6	81%	100%	67%	83%	83%	100%	64%	50%	72%	88%	51%	67%	22%	50%	24%	0%
2004	44	11	47	3	84%	82%	83%	100%	77%	82%	72%	33%	68%	55%	53%	67%	30%	9%	30%	67%
2005	40	15	61	10	88%	87%	80%	70%	75%	73%	70%	60%	63%	53%	59%	50%				
2006	39	12	52	16	92%	83%	85%	63%	90%	83%	79%	44%								
2007	38	16	54	5	89%	88%	87%	100%												

FALL	COHORT				YEAR 2				YEAR 3				YEAR 4				YEAR 5			
	ETHNIC COMB	CAUC	INTRN	UNASW	ETHNIC COMB	CAUC	INTRN	UNASW	ETHNIC COMB	CAUC	INTRN	UNASW	ETHNIC COMB	CAUC	INTRN	UNASW	ETHNIC COMB	CAUC	INTRN	UNASW
2000	100	536	37	30	79%	83%	59%	67%	73%	75%	46%	67%	68%	71%	49%	53%	31%	26%	19%	20%
2001	80	501	34	49	87%	83%	65%	82%	79%	74%	53%	77%	69%	69%	56%	73%	29%	25%	15%	35%
2002	100	479	15	35	90%	87%	93%	91%	78%	79%	73%	89%	72%	75%	60%	69%	27%	28%	13%	31%
2003	105	597	20	46	75%	84%	85%	91%	72%	77%	75%	78%	62%	69%	65%	67%	24%	25%	15%	24%
2004	105	663	22	55	83%	81%	86%	82%	74%	70%	68%	76%	60%	64%	59%	69%	29%	21%	9%	27%
2005	126	700	23	68	83%	85%	100%	90%	71%	76%	100%	81%	59%	68%	96%	68%				
2006	119	621	52	78	84%	82%	83%	71%	78%	73%	75%	59%								
2007	113	572	61	107	88%	85%	87%	85%												

PERSISTENCE RATES -- ALL NEW COHORT BY ORIGINAL TUITION CLASSIFICATION

FALL	COHORT			YEAR 2			YEAR 3			YEAR 4			YEAR 5		
	TOTAL	RES	NON	TOTAL	RES	NON	TOTAL	RES	NON	TOTAL	RES	NON	TOTAL	RES	NON
2000	703	481	222	81%	83%	77%	73%	75%	69%	68%	71%	63%	26%	29%	21%
2001	664	477	187	82%	85%	75%	74%	78%	63%	68%	73%	57%	26%	27%	22%
2002	629	488	141	88%	89%	84%	79%	82%	71%	74%	77%	65%	28%	27%	29%
2003	768	581	187	84%	86%	77%	76%	79%	68%	68%	70%	59%	25%	27%	18%
2004	845	648	197	81%	83%	76%	71%	73%	63%	64%	66%	55%	23%	24%	15%
2005	917	685	232	86%	86%	85%	76%	76%	77%	67%	67%	69%			
2006	870	636	234	82%	83%	77%	73%	74%	68%						
2007	853	605	248	86%	87%	83%									

FRESHMAN TO SOPHOMORE PERSISTENCE RATES



SOPHOMORE TO JUNIOR PERSISTENCE RATES

