



COLORADOSCHOOLOF**MINES**

2011 GRADUATION AND PERSISTENCE REPORT



Any questions
Concerning material contained
In this book should be directed to:

Institutional Research
Colorado School of Mines
1500 Illinois Street
Golden, CO 80401

Telephone: (303) 273-3383
Fax: (303) 273-3950
Email: tdouthit@mines.edu

Table of Contents

TABLE OF CONTENTS	3
<u>FIRST-TIME FRESHMAN COHORT</u>	
<i>GRADUATION RATES</i>	
FIRST-TIME FRESHMAN COHORT	4
BY GENDER	5
BY ETHNICITY	6
BY ORIGINAL TUITION CLASSIFICATION	8
<i>PERSISTENCE RATES</i>	
BY GENDER	9
BY ETHNICITY	10
BY ORIGINAL TUITION CLASSIFICATION	11
<u>TRANSFER COHORT</u>	
<i>GRADUATION RATES</i>	
TRANSFER COHORT	12
BY GENDER	13
BY ETHNICITY	14
BY ORIGINAL TUITION CLASSIFICATION	16
<i>PERSISTENCE RATES</i>	
BY GENDER	17
BY ETHNICITY	18
BY ORIGINAL TUITION CLASSIFICATION	19

DEFINITIONS

FRESHMAN COHORT – FIRST-TIME, FULL TIME (12 CREDITS) NEW FRESHMEN

TRANSFER COHORT – FIRST-TIME, FULL TIME (12 CREDITS) NEW TRANSFER

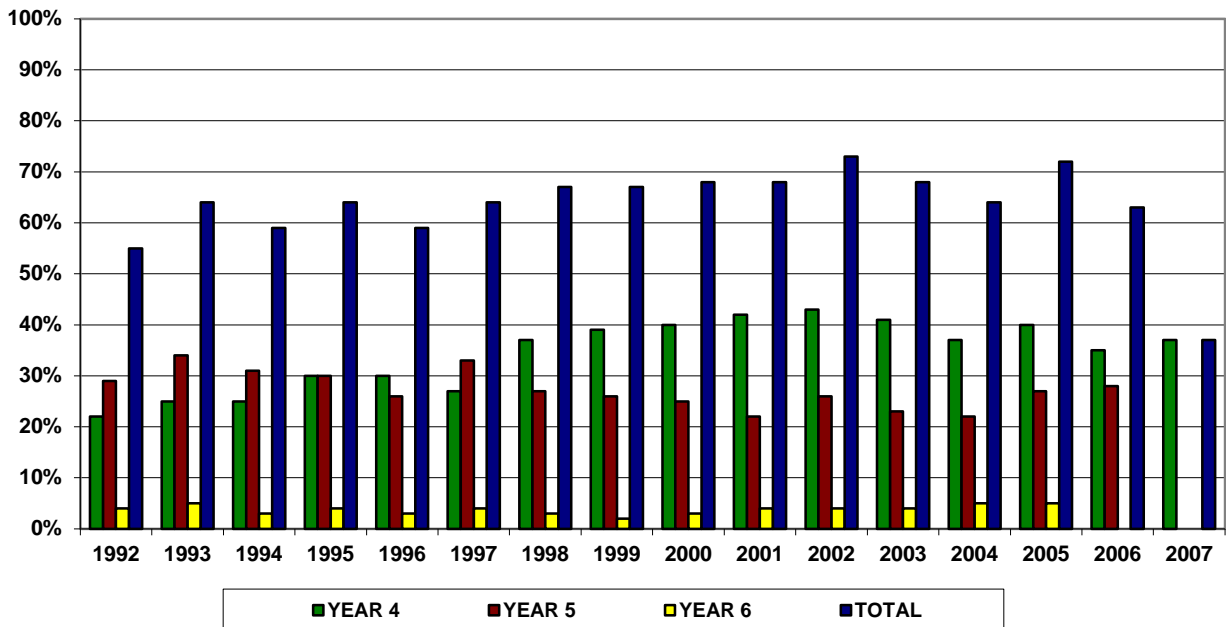
A persistence rate is the percentage of students in a given cohort who are enrolled at Colorado School of Mines in a specified term or are not enrolled in the specified term but have graduated from CSM between matriculation and that term. The number of students in the cohort is the denominator of the rate; the number of students enrolled or who have graduated but not enrolled one year later is the numerator of the rate.

A graduation rate is the percentage of students in a given cohort who have graduated within a specified period of time. The number of students in the cohort is the denominator of the rate; the number of students who graduated is the numerator of the rate.

GRADUATION RATES -- FRESHMAN COHORT

FALL TERM	COHORT	END OF YEAR 4	END OF YEAR 5	END OF YEAR 6	GRADRATE TOTAL
1992	512	22%	29%	4%	55%
1993	500	25%	34%	5%	64%
1994	483	25%	31%	3%	59%
1995	447	30%	30%	4%	64%
1996	557	30%	26%	3%	59%
1997	503	27%	33%	4%	64%
1998	537	37%	27%	3%	67%
1999	558	39%	26%	2%	67%
2000	632	40%	25%	3%	68%
2001	597	42%	22%	4%	68%
2002	564	43%	26%	4%	73%
2003	690	41%	23%	4%	68%
2004	747	37%	22%	5%	64%
2005	825	40%	27%	5%	72%
2006	771	35%	28%		63%
2007	780	37%			37%

TOTAL GRADUATION RATES -- FRESHMAN COHORT



GRADUATION RATES BY GENDER -- FRESHMAN COHORT

GRADUATION RATES -- FRESHMAN COHORT MALES

FALL TERM	COHORT	END OF YEAR 4	END OF YEAR 5	END OF YEAR 6	GRADRATE MALES
2000	470	37%	26%	4%	67%
2001	463	38%	25%	4%	67%
2002	433	39%	27%	5%	71%
2003	544	40%	22%	4%	66%
2004	574	36%	22%	5%	63%
2005	664	40%	27%	5%	72%
2006	585	33%	27%		60%
2007	611	36%			36%

GRADUATION RATES -- FRESHMAN COHORT FEMALES

FALL TERM	COHORT	END OF YEAR 4	END OF YEAR 5	END OF YEAR 6	GRADRATE FEMALES
2000	162	49%	23%	0%	72%
2001	134	57%	12%	4%	73%
2002	131	57%	21%	2%	80%
2003	146	47%	25%	4%	76%
2004	173	46%	20%	3%	69%
2005	161	39%	27%	4%	70%
2006	186	40%	28%		68%
2007	169	40%			40%

GRADUATION RATES BY ETHNICITY -- FRESHMAN COHORT

GRADUATION RATES -- COMBINED ETHNICITIES -- FRESHMAN COHORT

FALL TERM	COHORT	END OF YEAR 4	END OF YEAR 5	END OF YEAR 6	GRADRATE TOTAL
2000	89	30%	36%	2%	69%
2001	71	32%	31%	4%	67%
2002	91	37%	26%	2%	65%
2003	90	37%	22%	6%	65%
2004	92	29%	24%	5%	58%
2005	116	26%	22%	9%	57%
2006	109	27%	38%		65%
2007	104	38%			38%

GRADUATION RATES -- COMBINED ETHNICITIES MALES -- FRESHMAN COHORT

FALL TERM	COHORT	END OF YEAR 4	END OF YEAR 5	END OF YEAR 6	GRADRATE MALE
2000	55	33%	33%	3%	69%
2001	55	29%	35%	4%	68%
2002	62	31%	29%	3%	63%
2003	64	31%	23%	6%	60%
2004	67	30%	27%	6%	63%
2005	85	27%	25%	9%	61%
2006	75	25%	36%		61%
2007	70	40%			40%

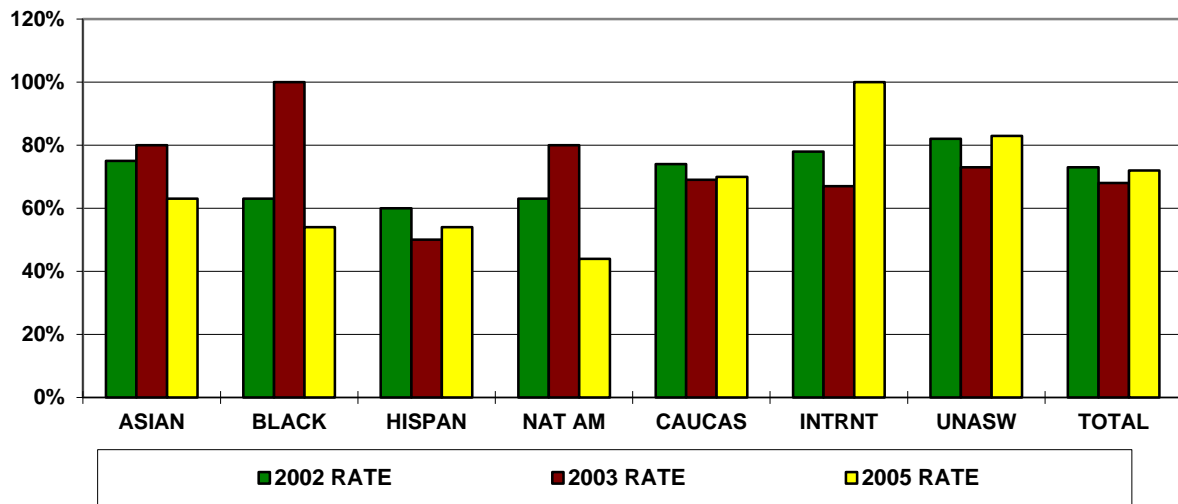
GRADUATION RATES COMBINED ETHNICITIES FEMALES -- FRESHMAN COHORT

FALL TERM	COHORT	END OF YEAR 4	END OF YEAR 5	END OF YEAR 6	GRADRATE FEMALE
2000	34	27%	41%	0%	68%
2001	16	44%	19%	6%	69%
2002	29	52%	21%	3%	76%
2003	26	50%	19%	4%	73%
2004	25	28%	16%	5%	48%
2005	31	23%	16%	6%	45%
2006	34	29%	44%		73%
2007	34	32%			32%

GRADUATION RATES -- FRESHMAN COHORT
BY ETHNICITY

ETHNICITY	ASIAN	BLACK	HISPAN	NAT AM	CAUCAS	INTRNT	UNASW	TOTAL
2002 COHORT	32	8	43	8	436	9	28	564
2002 RATE	75%	63%	60%	63%	74%	78%	82%	73%
2003 COHORT	30	5	50	5	545	15	40	690
2003 RATE	80%	100%	50%	80%	69%	67%	73%	68%
2004 COHORT	39	9	41	3	591	19	45	747
2004 RATE	65%	67%	53%	33%	64%	68%	84%	64%
2005 COHORT	35	13	59	9	635	21	53	825
2005 RATE	63%	54%	54%	44%	70%	100%	83%	72%

GRADUATION RATES BY ETHNICITY



GRADUATION RATES BY ORIGINAL TUITION CLASSIFICATION
FRESHMAN COHORT

GRADUATION RATES -- RESIDENTS -- FRESHMAN COHORT

FALL TERM	COHORT	END OF YEAR 4	END OF YEAR 5	END OF YEAR 6	GRADRATE RES
2000	436	41%	27%	3%	71%
2001	432	44%	24%	4%	72%
2002	439	46%	26%	4%	76%
2003	525	42%	24%	4%	70%
2004	572	37%	24%	5%	66%
2005	613	39%	26%	6%	71%
2006	565	35%	28%		63%
2007	551	38%			38%

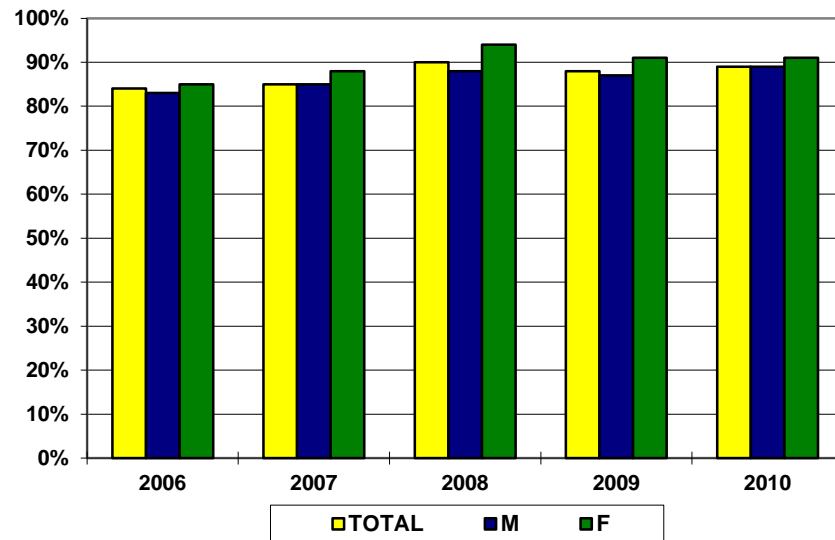
GRADUATION RATES -- NON-RESIDENTS -- FRESHMAN COHORT

FALL TERM	COHORT	END OF YEAR 4	END OF YEAR 5	END OF YEAR 6	GRADRATE NON-RES
2000	196	39%	20%	5%	64%
2001	165	37%	18%	4%	59%
2002	125	31%	24%	6%	61%
2003	165	38%	19%	4%	61%
2004	175	38%	15%	3%	56%
2005	212	38%	28%	4%	70%
2006	206	35%	24%		59%
2007	229	32%			32%

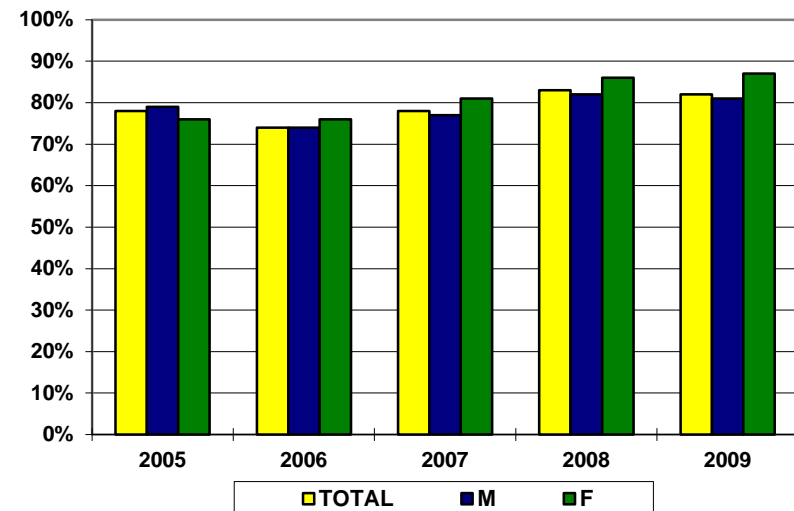
PERSISTENCE RATES -- FRESHMAN COHORT BY GENDER

FALL	COHORT			YEAR 2			YEAR 3			YEAR 4			YEAR 5		
	TOTAL	M	F	TOTAL	M	F	TOTAL	M	F	TOTAL	M	F	TOTAL	M	F
2001	599	465	134	84%	82%	87%	75%	74%	78%	72%	73%	72%	28%	31%	14%
2002	565	434	131	88%	86%	94%	80%	79%	86%	77%	75%	83%	29%	32%	21%
2003	690	545	145	84%	83%	90%	77%	75%	81%	71%	70%	76%	27%	27%	27%
2004	747	574	173	81%	80%	86%	71%	70%	75%	67%	66%	72%	23%	25%	18%
2005	825	664	161	87%	88%	83%	78%	79%	76%	74%	75%	72%	33%	34%	31%
2006	771	585	186	84%	83%	85%	74%	74%	76%	71%	71%	75%	29%	31%	25%
2007	780	611	169	85%	85%	88%	78%	77%	81%	74%	74%	74%	30%	31%	26%
2008	848	597	251	90%	88%	94%	83%	82%	86%	79%	78%	82%			
2009	879	658	221	88%	87%	91%	82%	81%	87%						
2010	875	644	231	89%	89%	91%									

FRESHMAN TO SOPHOMORE PERSISTENCE RATE



SOPHOMORE TO JUNIOR PERSISTENCE RATE



PERSISTENCE RATES BY ETHNICITY -- FRESHMAN COHORT

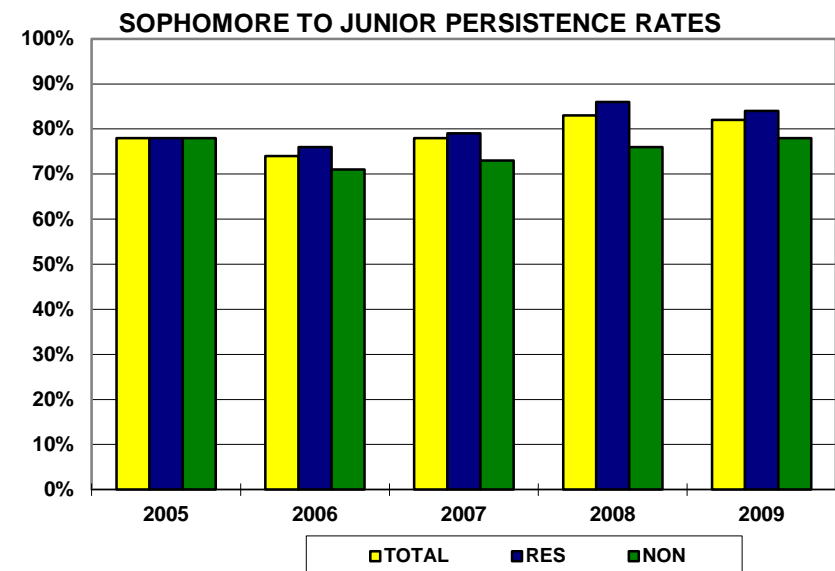
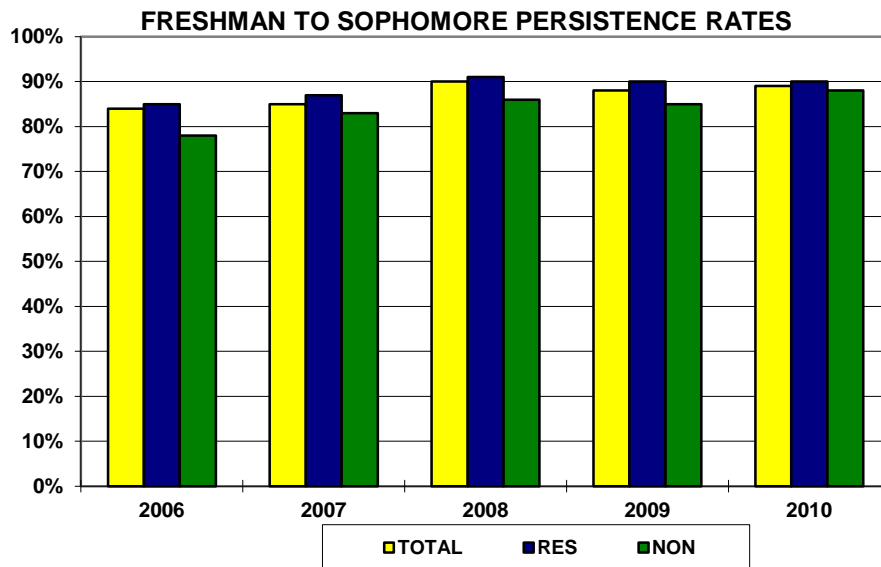
FALL	COHORT					YEAR 2					YEAR 3					YEAR 4					YEAR 5				
	ASIAN	BLACK	HISP	NAT AM	HAW	ASIAN	BLACK	HISP	NAT AM	HAW	ASIAN	BLACK	HISP	NAT AM	HAW	ASIAN	BLACK	HISP	NAT AM	HAW	ASIAN	BLACK	HISP	NAT AM	HAW
2000	37	8	38	6	na	95%	63%	71%	100%	na	87%	75%	55%	100%	na	87%	75%	55%	67%	na	32%	38%	34%	33%	na
2001	30	7	31	3	na	93%	71%	87%	100%	na	83%	71%	81%	67%	na	73%	71%	77%	67%	na	17%	29%	48%	33%	na
2002	32	9	43	8	na	91%	78%	90%	88%	na	81%	56%	77%	88%	na	72%	44%	80%	75%	na	28%	11%	33%	25%	na
2003	30	5	50	5	na	87%	100%	66%	100%	na	90%	100%	62%	60%	na	80%	100%	52%	80%	na	23%	80%	24%	0%	na
2004	39	9	41	3	na	87%	78%	83%	100%	na	77%	78%	73%	33%	na	72%	67%	54%	67%	na	31%	11%	32%	33%	na
2005	35	13	59	9	na	89%	92%	81%	67%	na	83%	77%	71%	56%	na	74%	62%	61%	67%	na	46%	38%	31%	33%	na
2006	36	8	49	15	na	94%	88%	84%	60%	na	89%	88%	82%	47%	na	86%	75%	78%	53%	na	33%	38%	46%	33%	na
2007	36	12	53	3	na	92%	83%	87%	100%	na	86%	58%	74%	67%	na	75%	50%	74%	67%	na	31%	25%	21%	0%	na
2008	48	13	51	6	na	92%	85%	96%	83%	na	92%	77%	86%	50%	na	83%	77%	90%	50%	na					
2009	48	11	55	5	na	94%	55%	91%	100%	na	88%	45%	82%	100%	na										
2010	26	7	76	0	1	92%	100%	88%	0%	100%															

FALL	COHORT					YEAR 2					YEAR 3					YEAR 4					YEAR 5				
	MULTI	ETHNIC COMB	CAUC	INTRN	UNASW	MULTI	ETHNIC COMB	CAUC	INTRN	UNASW	MULTI	ETHNIC COMB	CAUC	INTRN	UNASW	MULTI	ETHNIC COMB	CAUC	INTRN	UNASW	MULTI	ETHNIC COMB	CAUC	INTRN	UNASW
2000	na	89	491	29	23	na	82%	84%	76%	78%	na	73%	76%	57%	74%	na	71%	74%	62%	61%	na	35%	28%	24%	26%
2001	na	71	455	29	44	na	89%	84%	72%	82%	na	80%	75%	55%	80%	na	75%	72%	62%	75%	na	32%	26%	17%	39%
2002	na	92	436	9	28	na	89%	87%	100%	89%	na	77%	80%	89%	89%	na	73%	78%	78%	79%	na	28%	29%	22%	36%
2003	na	90	545	15	40	na	77%	85%	87%	90%	na	73%	77%	67%	78%	na	66%	72%	73%	73%	na	26%	27%	20%	28%
2004	na	92	591	19	45	na	85%	81%	84%	82%	na	74%	70%	68%	78%	na	63%	67%	68%	73%	na	30%	22%	11%	31%
2005	na	116	635	21	53	na	84%	87%	100%	92%	na	74%	77%	100%	87%	na	66%	74%	100%	83%	na	36%	33%	0%	42%
2006	na	108	560	37	66	na	84%	84%	78%	79%	na	80%	75%	73%	65%	na	77%	72%	65%	65%	na	46%	29%	10%	29%
2007	na	104	522	55	99	na	88%	85%	85%	86%	na	76%	78%	80%	74%	na	71%	76%	75%	68%	na	24%	33%	20%	29%
2008	na	118	602	22	106	na	92%	92%	77%	85%	na	86%	84%	55%	78%	na	84%	81%	50%	73%					
2009	na	119	613	40	107	na	89%	89%	85%	87%	na	82%	83%	80%	80%										
2010	21	131	687	25	22	95%	98%	90%	64%	91%															

The collection, storing, and reporting of race and ethnicity changed for higher education in 2009. Two new categories are added as a result of this change; Native Hawaiian (HAW) and Multi Racial (MULTI).

PERSISTENCE RATES -- FRESHMAN COHORT BY ORIGINAL TUITION CLASSIFICATION

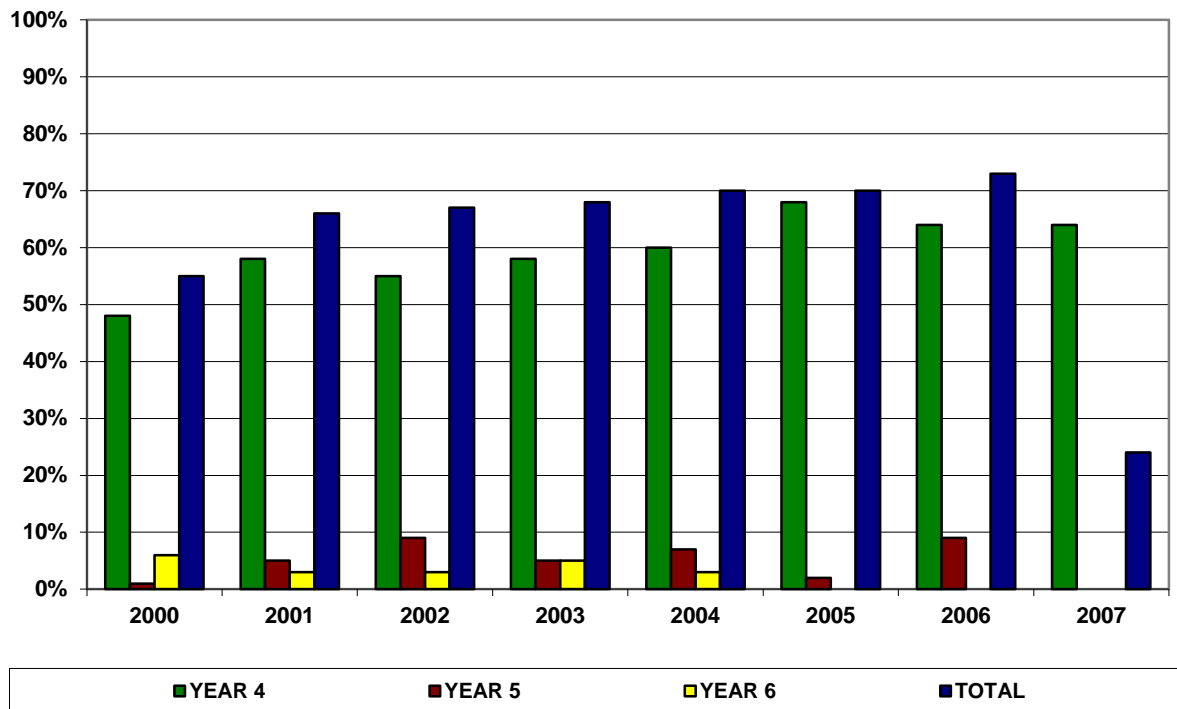
FALL	COHORT			YEAR 2			YEAR 3			YEAR 4			YEAR 5		
	TOTAL	RES	NON	TOTAL	RES	NON	TOTAL	RES	NON	TOTAL	RES	NON	TOTAL	RES	NON
2001	599	432	167	84%	87%	75%	75%	80%	63%	72%	77%	61%	28%	29%	25%
2002	565	440	125	88%	89%	82%	80%	83%	71%	77%	80%	66%	29%	29%	31%
2003	690	525	165	84%	86%	79%	77%	79%	68%	71%	74%	64%	27%	29%	20%
2004	747	572	175	81%	84%	74%	71%	73%	63%	67%	69%	59%	23%	26%	17%
2005	825	613	212	87%	87%	87%	78%	78%	78%	74%	74%	74%	33%	33%	35%
2006	771	565	206	84%	85%	78%	74%	76%	71%	71%	73%	69%	29%	31%	25%
2007	780	551	229	85%	87%	83%	78%	79%	73%	74%	74%	70%	30%	30%	31%
2008	848	585	263	90%	91%	86%	83%	86%	76%	79%	83%	71%			
2009	879	597	282	88%	90%	85%	82%	84%	78%						
2010	875	562	313	89%	90%	88%									



GRADUATION RATES -- TRANSFER COHORT

FALL TERM	COHORT	END OF YEAR 4	END OF YEAR 5	END OF YEAR 6	GRADRATE TOTAL
2000	71	48%	1%	6%	55%
2001	65	58%	5%	3%	66%
2002	64	55%	9%	3%	67%
2003	78	58%	5%	5%	68%
2004	94	60%	7%	3%	70%
2005	90	68%	2%	0%	70%
2006	80	64%	9%		73%
2007	74	64%			24%

TOTAL GRADUATION RATES -- TRANSFER COHORT



GRADUATION RATES BY GENDER -- TRANSFER COHORT

GRADUATION RATES -- TRANSFER COHORT MALES

FALL TERM	COHORT	END OF YEAR 4	END OF YEAR 5	END OF YEAR 6	GRADRATE MALES
2000	54	48%	2%	7%	57%
2001	42	55%	7%	5%	67%
2002	48	54%	8%	4%	66%
2003	54	54%	7%	7%	68%
2004	75	61%	7%	3%	71%
2005	72	69%	1%	0%	70%
2006	53	64%	8%		72%
2007	58	60%			28%

GRADUATION RATES -- TRANSFER COHORT FEMALES

FALL TERM	COHORT	END OF YEAR 4	GRADRATE YEAR 5	END OF YEAR 6	GRADRATE FEMALES
2000	17	47%	0%	0%	47%
2001	23	65%	0%	0%	65%
2002	16	56%	13%	0%	69%
2003	24	67%	0%	0%	67%
2004	19	53%	11%	5%	69%
2005	18	61%	6%	0%	67%
2006	27	63%	11%		74%
2007	16	69%			13%

GRADUATION RATES BY ETHNICITY -- TRANSFER COHORT

GRADUATION RATES -- COMBINED ETHNICITY -- TRANSFER COHORT

FALL TERM	COHORT	END OF YEAR 4	END OF YEAR 5	END OF YEAR 6	GRADRATE TOTAL
2000	11	55%	9%	9%	73%
2001	9	67%	0%	0%	67%
2002	8	63%	13%	0%	76%
2003	15	33%	7%	7%	47%
2004	13	31%	15%	0%	46%
2005	9	56%	0%	0%	56%
2006	9	67%	22%		89%
2007	9	56%			11%

GRADUATION RATES -- COMBINED ETHNICITY MALES -- TRANSFER COHORT

FALL TERM	COHORT	END OF YEAR 4	END OF YEAR 5	END OF YEAR 6	GRADRATE MALE
2000	6	50%	17%	17%	83%
2001	5	80%	0%	0%	80%
2002	2	50%	0%	0%	50%
2003	8	38%	13%	0%	51%
2004	10	30%	10%	0%	40%
2005	8	63%	0%	0%	63%
2006	6	67%	17%		84%
2007	6	50%			17%

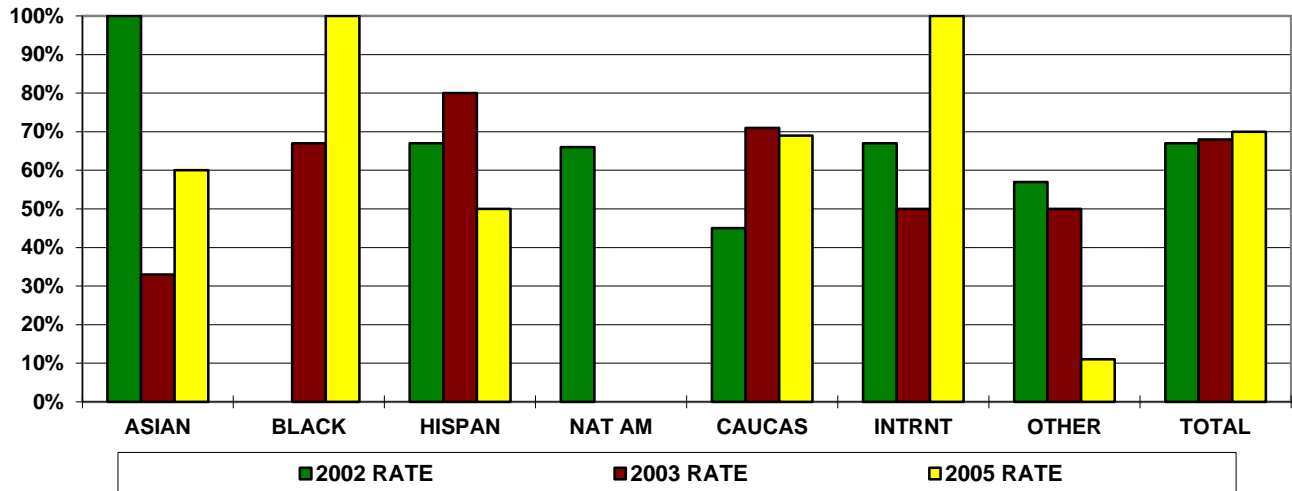
GRADUATION RATES COMBINED ETHNICITY FEMALES -- TRANSFER COHORT

FALL TERM	COHORT	END OF YEAR 4	END OF YEAR 5	END OF YEAR 6	GRADRATE FEMALE
2000	5	60%	0%	0%	60%
2001	4	50%	0%	0%	50%
2002	6	67%	17%	0%	84%
2003	7	57%	0%	0%	57%
2004	3	33%	33%	0%	66%
2005	1	0%	0%	0%	0%
2006	3	67%	33%		100%
2007	3	67%			0%

GRADUATION RATES -- TRANSFER COHORT
BY ETHNICITY -- 6 YEAR GRAD RATE

ETHNICITY	ASIAN	BLACK	HISPAN	NAT AM	CAUCAS	INTRNT	OTHER	TOTAL
2002 COHORT	1	1	3	3	43	6	7	64
2002 RATE	100%	0%	67%	66%	45%	67%	57%	67%
2003 COHORT	6	3	5	1	52	5	6	78
2003 RATE	33%	67%	80%	0%	71%	50%	50%	68%
2004 COHORT	5	2	6	0	68	3	10	94
2004 RATE	60%	0%	50%	0%	75%	67%	70%	70%
2005 COHORT	5	1	2	1	64	2	15	90
2005 RATE	60%	100%	50%	0%	69%	100%	11%	70%

GRADUATION RATES BY ETHNICITY



GRADUATION RATES BY ORIGINAL TUITION CLASSIFICATION
TRANSFER COHORT

GRADUATION RATES -- RESIDENTS -- TRANSFER COHORT

FALL TERM	COHORT	END OF YEAR 4	END OF YEAR 5	END OF YEAR 6	GRADRATE RES
2000	45	49%	2%	7%	58%
2001	45	51%	7%	4%	62%
2002	48	52%	8%	4%	64%
2003	56	52%	5%	13%	70%
2004	72	54%	14%	4%	72%
2005	70	66%	1%	0%	67%
2006	55	64%	11%		75%
2007	55	65%			20%

GRADUATION RATES -- NON-RESIDENTS -- TRANSFER COHORT

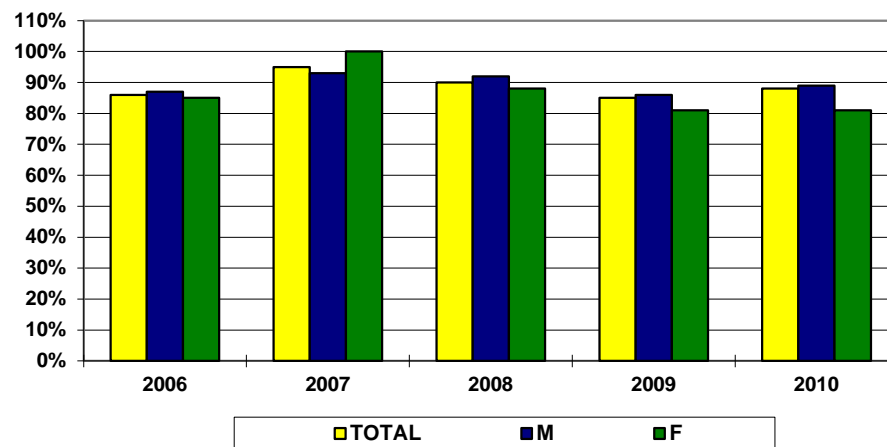
FALL TERM	COHORT	END OF YEAR 4	END OF YEAR 5	END OF YEAR 6	GRADRATE NON-RES
2000	26	46%	0%	4%	50%
2001	20	70%	0%	0%	70%
2002	16	56%	13%	13%	82%
2003	22	50%	32%	0%	68%
2004	22	64%	0%	0%	64%
2005	20	70%	5%	0%	75%
2006	25	64%	4%		68%
2007	19	53%			37%

PERSISTENCE RATES -- TRANSFER COHORT BY GENDER

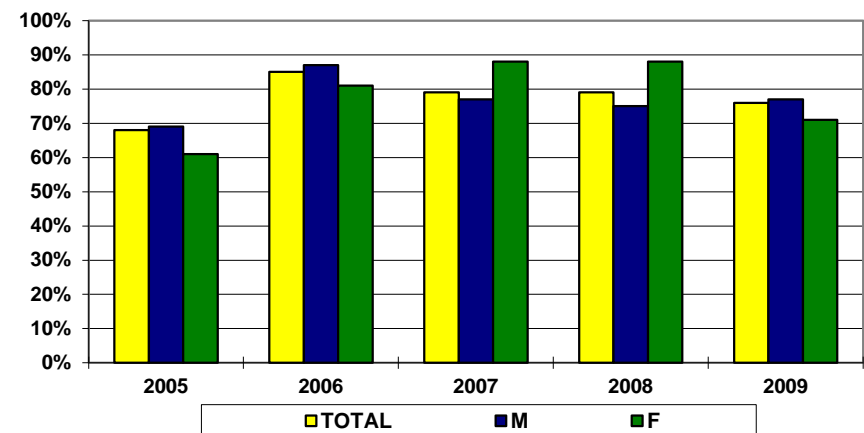
FALL	COHORT			YEAR 2			YEAR 3			YEAR 4			YEAR 5		
	TOTAL	M	F	TOTAL	M	F	TOTAL	M	F	TOTAL	M	F	TOTAL	M	F
2001	65	43	22	71%	65%	82%	62%	62%	61%	31%	31%	30%	8%	10%	4%
2002	64	48	16	89%	90%	88%	70%	69%	75%	45%	46%	44%	13%	15%	6%
2003	78*	54	23	77%	78%	74%	73%	78%	61%	36%	35%	39%	8%	7%	9%
2004	98*	77	20	81%	78%	90%	67%	66%	70%	39%	36%	45%	9%	8%	15%
2005	90	72	18	83%	86%	72%	68%	69%	61%	26%	24%	33%	3%	3%	6%
2006	80	53	27	86%	87%	85%	85%	87%	81%	48%	43%	56%	20%	19%	22%
2007	73	57	16	95%	93%	100%	79%	77%	88%	51%	54%	38%	11%	11%	13%
2008	52	36	16	90%	92%	88%	79%	75%	88%	40%	44%	31%			
2009	91	70	21	85%	86%	81%	76%	77%	71%						
2010	73	57	16	88%	89%	81%									

* Select records in the dataset do not report gender.

FRESHMEN TO SOPHOMORE PERSISTENCE RATE



SOPHOMORE TO JUNIOR PERSISTENCE RATE



PERSISTENCE RATES BY ETHNICITY -- TRANSFER COHORT

FALL	COHORT					YEAR 2					YEAR 3					YEAR 4					YEAR 5				
	ASIAN	BLACK	HISP	NAT AM	HAW	ASIAN	BLACK	HISP	NAT AM	HAW	ASIAN	BLACK	HISP	NAT AM	HAW	ASIAN	BLACK	HISP	NAT AM	HAW	ASIAN	BLACK	HISP	NAT AM	HAW
2000	4	1	5	1	na	75%	100%	60%	100%	na	75%	100%	60%	100%	na	50%	0%	40%	100%	na	0%	0%	0%	0%	na
2001	4	1	4	0	na	75%	100%	75%	0%	na	75%	100%	50%	0%	na	25%	0%	25%	0%	na	0%	0%	0%	0%	na
2002	1	1	3	3	na	100%	100%	100%	100%	na	100%	100%	100%	67%	na	100%	100%	67%	33%	na	0%	0%	0%	33%	na
2003	6	3	5	1	na	50%	100%	80%	0%	na	50%	100%	80%	0%	na	33%	67%	40%	0%	na	17%	0%	20%	0%	na
2004	5	2	6	0	na	60%	100%	83%	0%	na	80%	100%	67%	0%	na	40%	0%	50%	0%	na	20%	0%	17%	0%	na
2005	5	1	2	1	na	80%	100%	50%	100%	na	80%	100%	50%	100%	na	40%	0%	0%	100%	na	0%	0%	0%	100%	na
2006	3	2	3	1	na	100%	50%	100%	100%	na	100%	50%	100%	0%	na	33%	50%	67%	0%	na	33%	0%	33%	0%	na
2007	2	4	1	2	na	100%	100%	100%	100%	na	50%	100%	100%	50%	na	50%	75%	100%	0%	na	0%	75%	100%	0%	na
2008	1	0	1	0	na	100%	0%	100%	0%	na	100%	0%	100%	0%	na	100%	0%	100%	0%	na					
2009	7	1	3	1	na	71%	100%	67%	100%	na	71%	100%	67%	100%	na										
2010	2	1	6	2	0	50%	100%	100%	0%	0%															

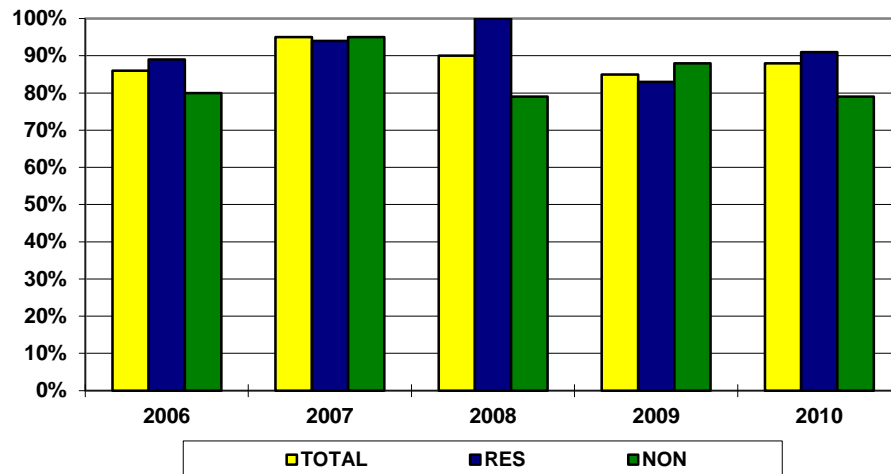
FALL	COHORT					YEAR 2					YEAR 3					YEAR 4					YEAR 5				
	MULTI	ETHNIC COMB	CAUC	INTRN	UNASW	MULTI	ETHNIC COMB	CAUC	INTRN	UNASW	MULTI	ETHNIC COMB	CAUC	INTRN	UNASW	MULTI	ETHNIC COMB	CAUC	INTRN	UNASW	MULTI	ETHNIC COMB	CAUC	INTRN	UNASW
2000	na	11	45	8	7	na	73%	73%	0%	29%	na	72%	67%	0%	43%	na	45%	31%	0%	29%	na	0%	7%	0%	0%
2001	na	9	46	5	5	na	77%	74%	20%	80%	na	67%	64%	40%	50%	na	22%	32%	20%	50%	na	0%	11%	0%	0%
2002	na	8	43	6	7	na	100%	86%	83%	100%	na	88%	67%	50%	86%	na	63%	47%	33%	29%	na	13%	14%	0%	14%
2003	na	15	52	5	6	na	67%	77%	80%	100%	na	67%	71%	100%	83%	na	40%	35%	40%	33%	na	13%	8%	0%	0%
2004	na	13	72	3	10	na	77%	81%	100%	80%	na	77%	65%	67%	70%	na	38%	39%	0%	50%	na	15%	8%	0%	10%
2005	na	9	64	2	15	na	78%	84%	100%	80%	na	78%	64%	100%	73%	na	33%	27%	50%	13%	na	11%	2%	0%	7%
2006	na	9	53	13	5	na	89%	83%	92%	100%	na	78%	81%	100%	100%	na	44%	45%	62%	40%	na	22%	22%	8%	25%
2007	na	9	50	6	8	na	100%	96%	100%	75%	na	78%	78%	100%	75%	na	56%	48%	83%	38%	na	44%	6%	0%	13%
2008	na	2	26	14	10	na	100%	96%	79%	90%	na	100%	74%	79%	89%	na	100%	44%	21%	44%					
2009	na	12	45	13	21	na	75%	80%	92%	95%	na	75%	78%	77%	71%										
2010	1	12	45	9	7	100%	75%	91%	89%	86%															

The collection, storing, and reporting of race and ethnicity changed for higher education in 2009. Two new categories are added as a result of this change; Native Hawaiian (HAW) and Multi Racial (MULTI).

PERSISTENCE RATES -- TRANSFER COHORT BY ORIGINAL TUITION CLASSIFICATION

FALL	COHORT			YEAR 2			YEAR 3			YEAR 4			YEAR 5		
	TOTAL	RES	NON	TOTAL	RES	NON	TOTAL	RES	NON	TOTAL	RES	NON	TOTAL	RES	NON
2001	65	45	20	71%	71%	70%	62%	60%	65%	31%	33%	25%	8%	11%	0%
2002	64	48	16	89%	88%	94%	70%	71%	69%	45%	44%	50%	13%	13%	13%
2003	78	56	22	77%	84%	59%	73%	75%	68%	36%	39%	27%	8%	11%	0%
2004	98	76	22	81%	78%	91%	67%	67%	68%	39%	42%	27%	9%	11%	5%
2005	90	70	20	83%	83%	85%	68%	67%	70%	26%	27%	20%	3%	3%	5%
2006	80	55	25	86%	89%	80%	85%	87%	80%	48%	45%	52%	20%	25%	8%
2007	73	54	19	95%	94%	95%	79%	83%	68%	51%	54%	42%	11%	15%	0%
2008	52	28	24	90%	100%	79%	79%	79%	79%	40%	43%	38%			
2009	91	66	25	85%	83%	88%	76%	74%	80%						
2010	73	54	19	88%	91%	79%									

FRESHMAN TO SOPHOMORE PERSISTENCE RATES



SOPHOMORE TO JUNIOR PERSISTENCE RATES

