



COLORADOSCHOOLOF**MINES**

2013 GRADUATION AND PERSISTENCE REPORT



Any questions
Concerning material contained
In this book should be directed to:

Institutional Research
Colorado School of Mines
1500 Illinois Street
Golden, CO 80401

Telephone: (303) 273-3383
Fax: (303) 273-3950
Email: tdouthit@mines.edu

Table of Contents

TABLE OF CONTENTS	3
<u>FIRST-TIME FRESHMAN COHORT</u>	
<i>GRADUATION RATES</i>	
FIRST-TIME FRESHMAN COHORT	4
BY GENDER	5
BY ETHNICITY	6
BY ORIGINAL TUITION CLASSIFICATION	8
<i>PERSISTENCE RATES</i>	
BY GENDER	9
BY ETHNICITY	10
BY ORIGINAL TUITION CLASSIFICATION	11
<u>TRANSFER COHORT</u>	
<i>GRADUATION RATES</i>	
TRANSFER COHORT	12
BY GENDER	13
BY ETHNICITY	14
BY ORIGINAL TUITION CLASSIFICATION	16
<i>PERSISTENCE RATES</i>	
BY GENDER	17
BY ETHNICITY	18
BY ORIGINAL TUITION CLASSIFICATION	19

DEFINITIONS

FRESHMAN COHORT – FIRST-TIME, FULL TIME (12 CREDITS) NEW FRESHMEN
 TRANSFER COHORT – FIRST-TIME, FULL TIME (12 CREDITS) NEW TRANSFER

A persistence rate is the percentage of students in a given cohort who are enrolled at Colorado School of Mines in a specified term or are not enrolled in the specified term but have graduated from CSM between matriculation and that term. The number of students in the cohort is the denominator of the rate; the number of students enrolled or who have graduated but not enrolled one year later is the numerator of the rate.

A graduation rate is the percentage of students in a given cohort who have graduated within a specified period of time. The number of students in the cohort is the denominator of the rate; the number of students who graduated is the numerator of the rate.

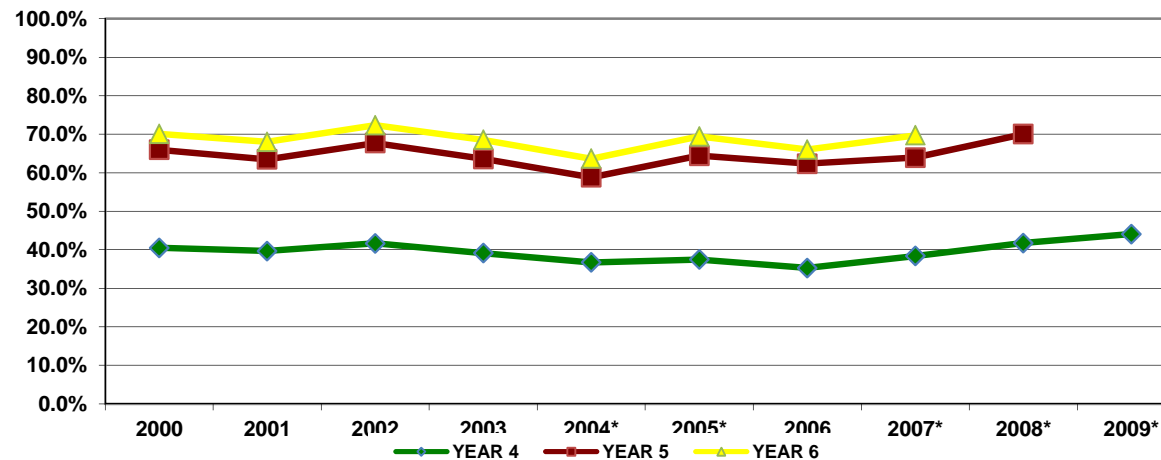
Once a student is in the cohort, they remain in the cohort, even if they switch to part-time or drop out. However, adjustments can be made to the initial cohort for exclusions, which include the death of a student, permanent disability, military deployment, or an official church mission.

GRADUATION RATES -- FRESHMAN COHORT

FALL TERM	COHORT	REVISED COHORT	END OF YEAR 4		END OF YEAR 5		END OF YEAR 6	
2000	632	632	256	40.5%	161	66.0%	26	70.1%
2001	597	597	237	39.7%	142	63.5%	27	68.0%
2002	564	564	235	41.7%	147	67.7%	26	72.3%
2003	690	690	270	39.1%	169	63.6%	34	68.6%
2004*	747	746	274	36.7%	165	58.8%	36	63.7%
2005*	825	824	309	37.5%	222	64.4%	41	69.4%
2006	771	771	272	35.3%	209	62.4%	28	66.0%
2007*	780	779	299	38.4%	199	63.9%	45	69.7%
2008*	848	845	353	41.8%	239	70.1%		
2009*	879	878	387	44.1%				

*Cohorts have been revised due to exclusions.

TOTAL GRADUATION RATES -- FRESHMAN COHORT



GRADUATION RATES BY GENDER -- FRESHMAN COHORT

GRADUATION RATES -- FRESHMAN COHORT MALES

FALL TERM	COHORT	REVISED COHORT	END OF YEAR 4		END OF YEAR 5		END OF YEAR 6	
2000	471	471	178	37.8%	122	63.7%	26	69.2%
2001	463	463	163	35.2%	125	62.2%	21	66.7%
2002	433	433	163	37.6%	117	64.7%	22	69.7%
2003	544	544	206	37.9%	128	61.4%	27	66.4%
2004*	574	573	198	34.6%	129	57.1%	30	62.3%
2005*	664	663	152	22.9%	179	49.9%	35	55.2%
2006	585	585	197	33.7%	156	60.3%	25	64.6%
2007	611	611	229	37.5%	164	64.3%	32	69.6%
2008*	598	595	237	39.8%	173	68.9%		
2009*	658	657	279	42.5%				

GRADUATION RATES -- FRESHMAN COHORT FEMALES

FALL TERM	COHORT	REVISED COHORT	END OF YEAR 4		END OF YEAR 5		END OF YEAR 6	
2000	161	161	78	48.4%	39	72.7%	0	72.7%
2001	134	134	74	55.2%	17	67.9%	6	72.4%
2002	131	131	72	55.0%	30	77.9%	4	80.9%
2003	146	146	64	43.8%	41	71.9%	7	76.7%
2004	173	173	76	43.9%	36	64.7%	6	68.2%
2005	161	161	57	35.4%	43	62.1%	6	65.8%
2006	186	186	75	40.3%	53	68.8%	3	70.4%
2007*	169	168	70	41.7%	35	62.5%	13	70.2%
2008	250	250	116	46.4%	66	72.8%		
2009	221	221	108	48.9%				

GRADUATION RATES BY ETHNICITY -- FRESHMAN COHORT

GRADUATION RATES -- COMBINED ETHNICITIES -- FRESHMAN COHORT

FALL TERM	COHORT	REVISED COHORT	END OF YEAR 4		END OF YEAR 5		END OF YEAR 6	
2002	91	91	33	36.3%	25	63.7%	2	65.9%
2003	90	90	29	32.2%	24	58.9%	5	64.4%
2004	92	92	27	29.3%	22	53.3%	4	57.6%
2005	116	116	29	25.0%	26	47.4%	10	56.0%
2006	109	109	30	27.5%	42	66.1%	5	70.6%
2007	104	104	41	39.4%	22	60.6%	6	66.3%
2008	118	118	43	36.4%	37	67.8%		
2009	118	118	41	34.7%				

GRADUATION RATES -- COMBINED ETHNICITIES

MALES -- FRESHMAN COHORT

FALL TERM	COHORT	REVISED COHORT	END OF YEAR 4		END OF YEAR 5		END OF YEAR 6	
2002	62	62	18	29.0%	19	59.7%	2	62.9%
2003	64	64	18	28.1%	17	54.7%	4	60.9%
2004	67	67	20	29.9%	18	56.7%	3	61.2%
2005	85	85	22	25.9%	21	50.6%	8	60.0%
2006	75	75	20	26.7%	27	62.7%	3	66.7%
2007	70	70	30	42.9%	13	61.4%	5	68.6%
2008	81	81	27	33.3%	28	67.9%		
2009	86	86	31	36.0%				

GRADUATION RATES COMBINED ETHNICITIES

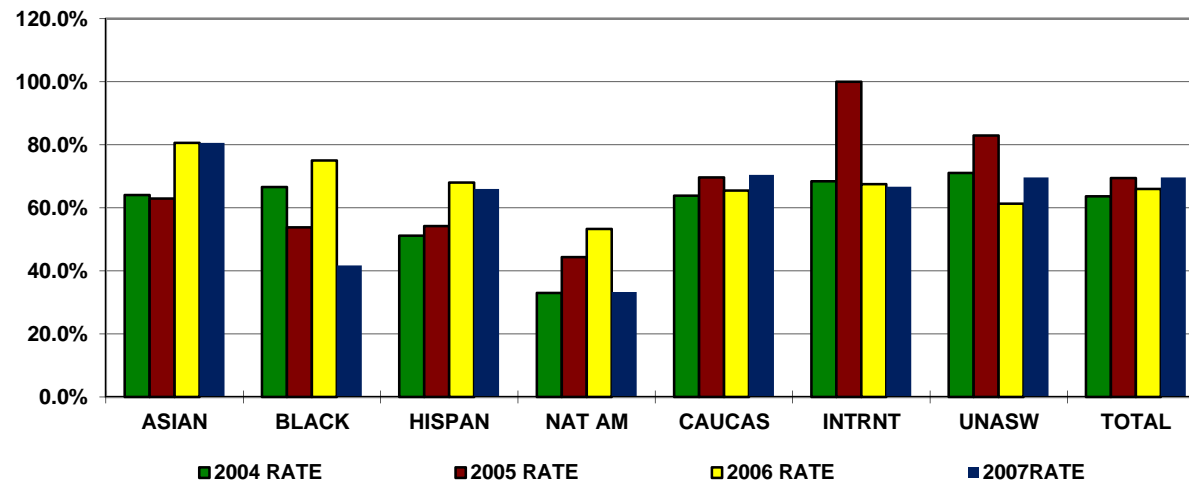
FEMALES -- FRESHMAN COHORT

FALL TERM	COHORT	REVISED COHORT	END OF YEAR 4		END OF YEAR 5		END OF YEAR 6	
2002	29	29	15	51.7%	6	72.4%	0	72.4%
2003	26	26	11	42.3%	7	69.2%	1	73.1%
2004	25	25	7	28.0%	4	44.0%	1	48.0%
2005	31	31	7	22.6%	5	38.7%	2	45.2%
2006	34	34	10	29.4%	15	73.5%	2	79.4%
2007	34	34	11	32.4%	9	58.8%	1	61.8%
2008	37	37	16	43.2%	9	67.6%		
2009	32	32	10	31.3%				

GRADUATION RATES -- FRESHMAN COHORT BY ETHNICITY

ETHNICITY	ASIAN	BLACK	HISPAN	NAT AM	CAUCAS	INTRNT	UNASW	TOTAL
2004 COHORT	39	9	41	3	590	19	45	746
2004 RATE	64.1%	66.6%	51.2%	33.0%	63.9%	68.4%	71.1%	63.7%
2005 COHORT	35	13	59	9	634	21	53	824
2005 RATE	62.9%	53.8%	54.2%	44.4%	69.7%	100.0%	83.0%	69.4%
2006 COHORT	36	8	50	15	560	40	62	771
2006 RATE	80.6%	75.0%	68.0%	53.3%	65.5%	67.5%	61.3%	66.0%
2007 COHORT	36	12	53	3	522	54	99	779
2007 RATE	80.6%	41.7%	66.0%	33.3%	70.5%	66.7%	69.7%	69.7%

GRADUATION RATES BY ETHNICITY



GRADUATION RATES BY ORIGINAL TUITION CLASSIFICATION
FRESHMAN COHORT

GRADUATION RATES -- RESIDENTS -- FRESHMAN COHORT

FALL TERM	COHORT	REVISED COHORT	END OF YEAR 4		END OF YEAR 5		END OF YEAR 6	
2000	436	436	179	41.1%	122	69.0%	15	72.5%
2001	432	432	181	41.9%	109	67.1%	20	71.8%
2002	439	439	197	44.9%	119	72.0%	17	75.9%
2003	525	525	208	39.6%	139	66.1%	26	71.0%
2004*	572	571	208	36.4%	138	60.6%	31	66.0%
2005*	613	612	230	37.6%	162	64.1%	34	69.6%
2006	565	656	199	30.3%	159	54.6%	19	57.5%
2007	551	551	224	40.7%	138	65.7%	31	71.3%
2008*	585	583	265	45.5%	159	72.7%		
2009*	597	596	268	45.0%				

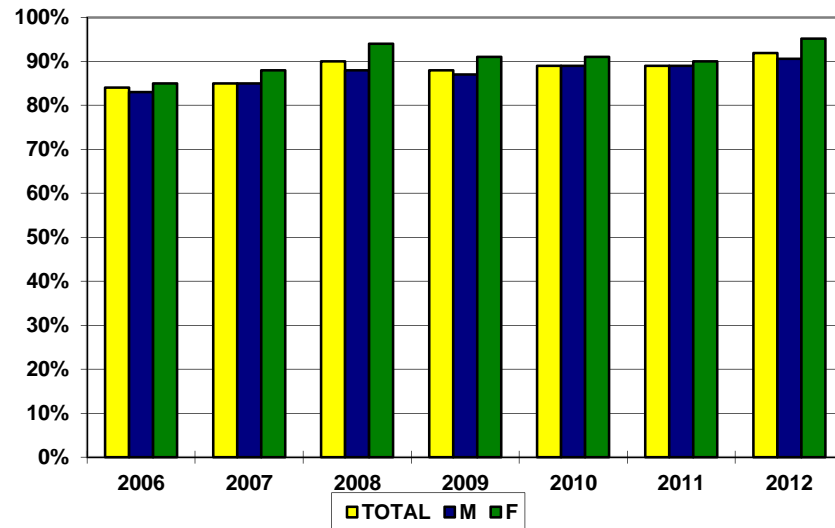
GRADUATION RATES -- NON-RESIDENTS -- FRESHMAN COHORT

FALL TERM	COHORT	REVISED COHORT	END OF YEAR 4		END OF YEAR 5		END OF YEAR 6	
2000	196	196	77	39.3%	39	59.2%	11	64.8%
2001	165	165	56	33.9%	33	53.9%	7	58.2%
2002	125	125	38	30.4%	28	52.8%	9	60.0%
2003	165	165	62	37.6%	30	55.8%	8	60.6%
2004	175	175	66	37.7%	27	53.1%	5	56.0%
2005	212	212	79	37.3%	60	65.6%	7	68.9%
2006	206	206	73	35.4%	50	59.7%	9	64.1%
2007*	229	228	75	32.9%	61	59.6%	14	65.8%
2008*	263	262	88	33.6%	80	64.1%		
2009	282	282	119	42.2%				

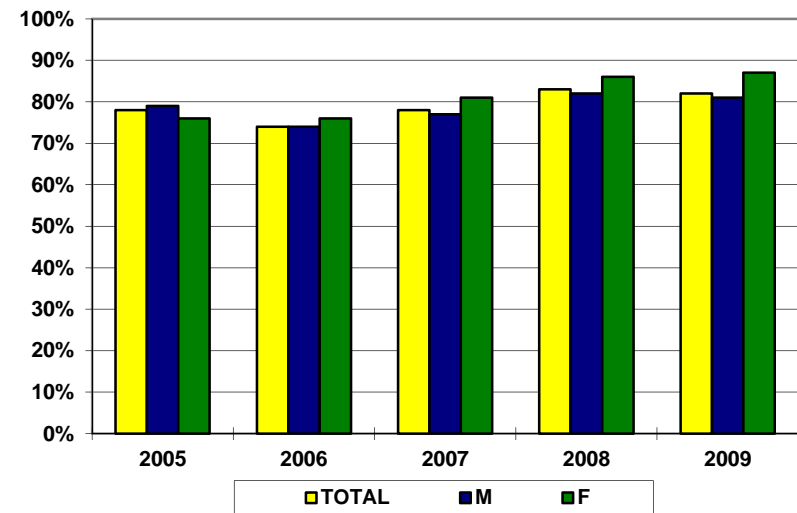
PERSISTENCE RATES -- FRESHMAN COHORT BY GENDER

FALL	COHORT			YEAR 2			YEAR 3			YEAR 4			YEAR 5		
	TOTAL	M	F	TOTAL	M	F	TOTAL	M	F	TOTAL	M	F	TOTAL	M	F
2003	690	545	145	84%	83%	90%	77%	75%	81%	71%	70%	76%	27%	27%	27%
2004	747	574	173	81%	80%	86%	71%	70%	75%	67%	66%	72%	23%	25%	18%
2005	825	664	161	87%	88%	83%	78%	79%	76%	74%	75%	72%	33%	34%	31%
2006	771	585	186	84%	83%	85%	74%	74%	76%	71%	71%	75%	29%	31%	25%
2007	780	611	169	85%	85%	88%	78%	77%	81%	74%	74%	74%	30%	31%	26%
2008	848	597	251	90%	88%	94%	83%	82%	86%	79%	78%	82%	33%	35%	31%
2009	879	658	221	88%	87%	91%	82%	81%	87%	79%	77%	85%	29%	30%	26%
2010	875	644	231	89%	89%	91%	83%	82%	86%	80%	78%	84%			
2011	879	656	223	89%	89%	90%	84%	83%	87%						
2012	949	679	270	92%	91%	95%									

FRESHMAN TO SOPHOMORE PERSISTENCE RATE



SOPHOMORE TO JUNIOR PERSISTENCE RATE



PERSISTENCE RATES BY ETHNICITY -- FRESHMAN COHORT

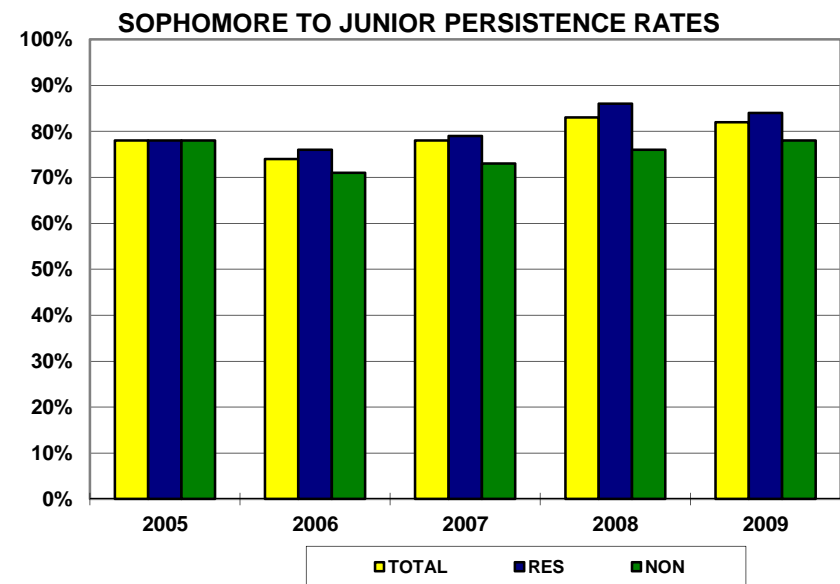
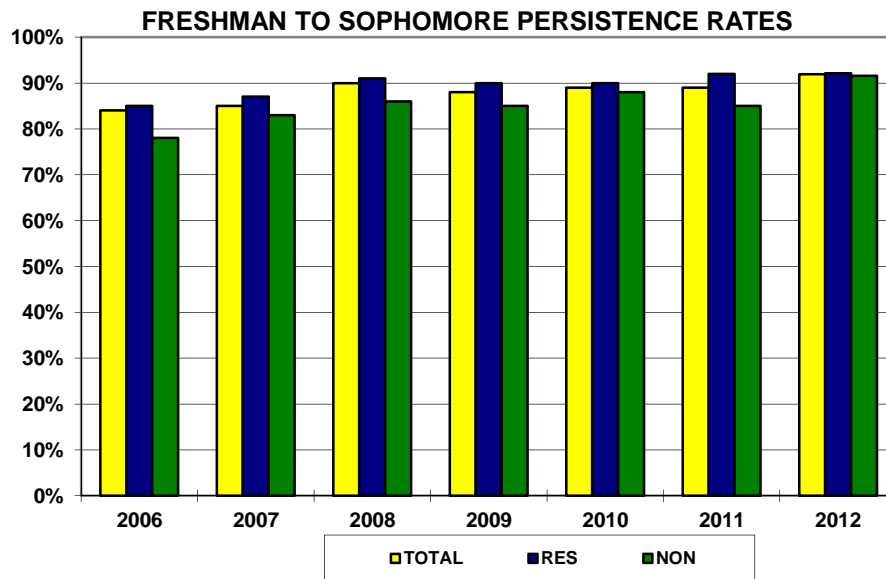
FALL	COHORT					YEAR 2					YEAR 3					YEAR 4					YEAR 5				
	ASIAN	BLACK	HISP	NAT AM	HAW	ASIAN	BLACK	HISP	NAT AM	HAW	ASIAN	BLACK	HISP	NAT AM	HAW	ASIAN	BLACK	HISP	NAT AM	HAW	ASIAN	BLACK	HISP	NAT AM	HAW
2001	30	7	31	3	na	93%	71%	87%	100%	na	83%	71%	81%	67%	na	73%	71%	77%	67%	na	17%	29%	48%	33%	na
2002	32	9	43	8	na	91%	78%	90%	88%	na	81%	56%	77%	88%	na	72%	44%	80%	75%	na	28%	11%	33%	25%	na
2003	30	5	50	5	na	87%	100%	66%	100%	na	90%	100%	62%	60%	na	80%	100%	52%	80%	na	23%	80%	24%	0%	na
2004	39	9	41	3	na	87%	78%	83%	100%	na	77%	78%	73%	33%	na	72%	67%	54%	67%	na	31%	11%	32%	33%	na
2005	35	13	59	9	na	89%	92%	81%	67%	na	83%	77%	71%	56%	na	74%	62%	61%	67%	na	46%	38%	31%	33%	na
2006	36	8	49	15	na	94%	88%	84%	60%	na	89%	88%	82%	47%	na	86%	75%	78%	53%	na	33%	38%	46%	33%	na
2007	36	12	53	3	na	92%	83%	87%	100%	na	86%	58%	74%	67%	na	75%	50%	74%	67%	na	31%	25%	21%	0%	na
2008	48	13	51	6	na	92%	85%	96%	83%	na	92%	77%	86%	50%	na	83%	77%	90%	50%	na	38%	31%	49%	33%	na
2009	47	11	55	5	1	94%	55%	91%	100%	na	88%	45%	82%	100%	na	83%	45%	75%	100%	na	30%	18%	47%	0%	0%
2010	31	7	76	0	0	92%	100%	88%	0%	0%	86%	86%	82%	0%	0%	89%	86%	82%	0%	0%					
2011	26	6	80	4	0	92%	67%	81%	100%	0%	89%	67%	78%	100%	0%										
2012	45	9	66	0	1	96%	89%	89%	0%	0%															

FALL	COHORT					YEAR 2					YEAR 3					YEAR 4					YEAR 5				
	MULTI	ETHNIC COMB	CAUC	INTRN	UNASW	MULTI	ETHNIC COMB	CAUC	INTRN	UNASW	MULTI	ETHNIC COMB	CAUC	INTRN	UNASW	MULTI	ETHNIC COMB	CAUC	INTRN	UNASW	MULTI	ETHNIC COMB	CAUC	INTRN	UNASW
2001	na	71	455	29	44	na	89%	84%	72%	82%	na	80%	75%	55%	80%	na	75%	72%	62%	75%	na	32%	26%	17%	39%
2002	na	92	436	9	28	na	89%	87%	100%	89%	na	77%	80%	89%	89%	na	73%	78%	78%	79%	na	28%	29%	22%	36%
2003	na	90	545	15	40	na	77%	85%	87%	90%	na	73%	77%	67%	78%	na	66%	72%	73%	73%	na	26%	27%	20%	28%
2004	na	92	591	19	45	na	85%	81%	84%	82%	na	74%	70%	68%	78%	na	63%	67%	68%	73%	na	30%	22%	11%	31%
2005	na	116	635	21	53	na	84%	87%	100%	92%	na	74%	77%	100%	87%	na	66%	74%	100%	83%	na	36%	33%	0%	42%
2006	na	108	560	37	66	na	84%	84%	78%	79%	na	80%	75%	73%	65%	na	77%	72%	65%	65%	na	46%	29%	10%	29%
2007	na	104	522	55	99	na	88%	85%	85%	86%	na	76%	78%	80%	74%	na	71%	76%	75%	68%	na	24%	33%	20%	29%
2008	na	118	602	22	106	na	92%	92%	77%	85%	na	86%	84%	55%	78%	na	84%	81%	50%	73%	na	42%	34%	18%	25%
2009	na	119	613	40	107	na	89%	89%	85%	87%	na	82%	83%	80%	80%	na	76%	80%	78%	77%	na	36%	28%	15%	38%
2010	21	141	687	25	22	95%	98%	90%	64%	91%	81	82%	84%	64%	82%	81	83%	80%	56%	73%					
2011	34	150	695	31	3	88%	85%	91%	81%	100%	76.5	79%	85%	77%	100%										
2012	52	173	740	34	2	92%	91%	92%	91%	100%															

The collection, storing, and reporting of race and ethnicity changed for higher education in 2009. Two new categories are added as a result of this change; Native Hawaiian (HAW) and Multi Racial (MULTI).

PERSISTENCE RATES -- FRESHMAN COHORT BY ORIGINAL TUITION CLASSIFICATION

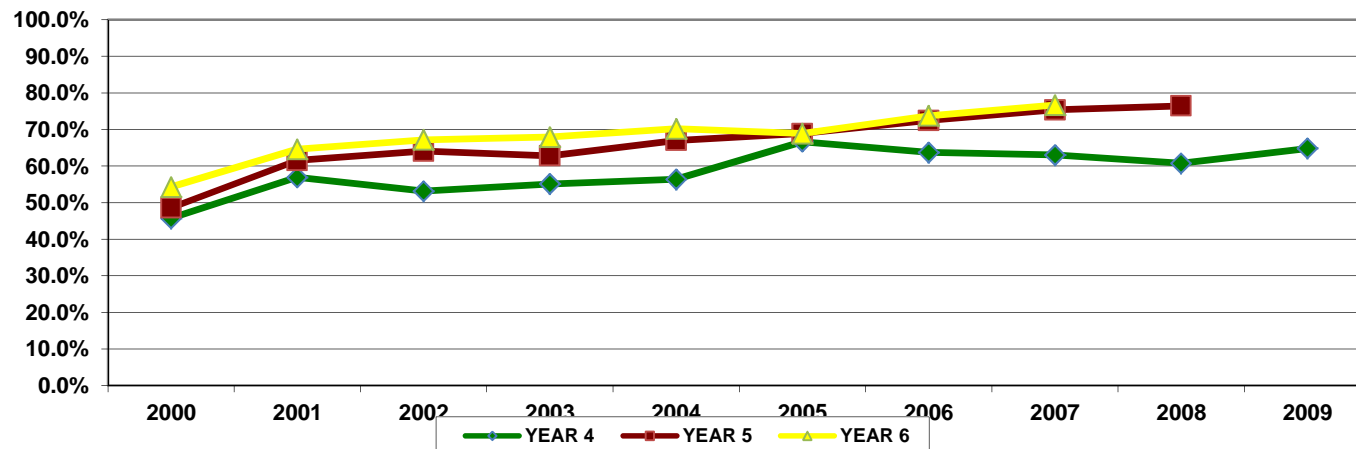
FALL	COHORT			YEAR 2			YEAR 3			YEAR 4			YEAR 5		
	TOTAL	RES	NON	TOTAL	RES	NON	TOTAL	RES	NON	TOTAL	RES	NON	TOTAL	RES	NON
2003	690	525	165	84%	86%	79%	77%	79%	68%	71%	74%	64%	27%	29%	20%
2004	747	572	175	81%	84%	74%	71%	73%	63%	67%	69%	59%	23%	26%	17%
2005	825	613	212	87%	87%	87%	78%	78%	78%	74%	74%	74%	33%	33%	35%
2006	771	565	206	84%	85%	78%	74%	76%	71%	71%	73%	69%	29%	31%	25%
2007	780	551	229	85%	87%	83%	78%	79%	73%	74%	74%	70%	30%	30%	31%
2008	848	585	263	90%	91%	86%	83%	86%	76%	79%	83%	71%	33%	33%	34%
2009	879	597	282	88%	90%	85%	82%	84%	78%	79%	81%	76%	29%	30%	26%
2010	875	562	313	89%	90%	88%	83%	85%	81%	80%	81%	77%			
2011	879	523	356	89%	92%	85%	84%	86%	80%						
2012	949	570	379	92%	92%	92%									



GRADUATION RATES -- TRANSFER COHORT

FALL TERM	COHORT	REVISED COHORT	END OF YEAR 4		END OF YEAR 5		END OF YEAR 6	
2000	70	70	32	45.7%	2	48.6%	4	54.3%
2001	65	65	37	56.9%	3	61.5%	2	64.6%
2002	64	64	34	53.1%	7	64.1%	2	67.2%
2003	78	78	43	55.1%	6	62.8%	4	67.9%
2004	94	94	53	56.4%	10	67.0%	3	70.2%
2005	90	90	60	66.7%	2	68.9%	0	68.9%
2006	80	80	51	63.8%	7	72.5%	1	73.8%
2007	73	73	46	63.0%	9	75.3%	1	76.7%
2008	51	51	31	60.8%	8	76.5%		
2009	91	91	59	64.8%				

TOTAL GRADUATION RATES -- TRANSFER COHORT



GRADUATION RATES BY GENDER -- TRANSFER COHORT

GRADUATION RATES -- TRANSFER COHORT MALES

FALL TERM	COHORT	REVISED COHORT	END OF YEAR 4		END OF YEAR 5		END OF YEAR 6	
2000	53	53	25	47.2%	1	49.1%	4	56.6%
2001	42	42	22	52.4%	3	59.5%	2	64.3%
2002	48	48	26	54.2%	4	62.5%	2	66.7%
2003	54	54	28	51.9%	5	61.1%	4	68.5%
2004	75	75	43	57.3%	8	68.0%	2	70.7%
2005	72	72	50	69.4%	1	70.8%	0	70.8%
2006	53	53	34	64.2%	4	71.7%	1	73.6%
2007	57	57	35	61.4%	6	71.9%	1	73.7%
2008	35	35	22	62.9%	6	80.0%		
2009	70	70	46	65.7%				

GRADUATION RATES -- TRANSFER COHORT FEMALES

FALL TERM	COHORT	REVISED COHORT	END OF YEAR 4		END OF YEAR 5		END OF YEAR 6	
2000	17	17	7	41.2%	1	47.1%	0	47.1%
2001	23	23	15	65.2%	0	65.2%	0	65.2%
2002	16	16	8	50.0%	3	68.8%	0	68.8%
2003	24	24	15	62.5%	1	66.7%	0	66.7%
2004	19	19	10	52.6%	2	63.2%	1	68.4%
2005	18	18	10	55.6%	1	61.1%	0	61.1%
2006	27	27	17	63.0%	3	74.1%	0	74.1%
2007	16	16	11	68.8%	3	87.5%	0	87.5%
2008	16	16	9	56.3%	2	68.8%		
2009	21	21	13	61.9%				

GRADUATION RATES BY ETHNICITY -- TRANSFER COHORT

GRADUATION RATES -- COMBINED ETHNICITY -- TRANSFER COHORT

FALL TERM	COHORT	REVISED COHORT	END OF YEAR 4		END OF YEAR 5		END OF YEAR 6	
2002	8	8	4	50.0%	2	75.0%	0	75.0%
2003	15	15	5	33.3%	2	46.7%	1	53.3%
2004	13	13	4	30.8%	2	46.2%	0	46.2%
2005	9	9	5	55.6%	0	55.6%	0	55.6%
2006	9	9	6	66.7%	2	88.9%	0	88.9%
2007	9	9	5	55.6%	2	77.8%	0	77.8%
2008	2	2	0	0.0%	2	100.0%		
2009	10	10	7	70.0%				

GRADUATION RATES -- COMBINED ETHNICITY

MALES -- TRANSFER COHORT

FALL TERM	COHORT	REVISED COHORT	END OF YEAR 4		END OF YEAR 5		END OF YEAR 6	
2002	2	2	1	50.0%	0	50.0%	0	50.0%
2003	8	8	2	25.0%	1	37.5%	1	50.0%
2004	10	10	3	30.0%	1	40.0%	0	40.0%
2005	8	8	5	62.5%	0	62.5%	0	62.5%
2006	6	6	4	66.7%	1	83.3%	0	83.3%
2007	6	6	3	50.0%	1	66.7%	0	66.7%
2008	1	1	0	0.0%	1	100.0%		
2009	6	6	5	83.3%				

GRADUATION RATES COMBINED ETHNICITY

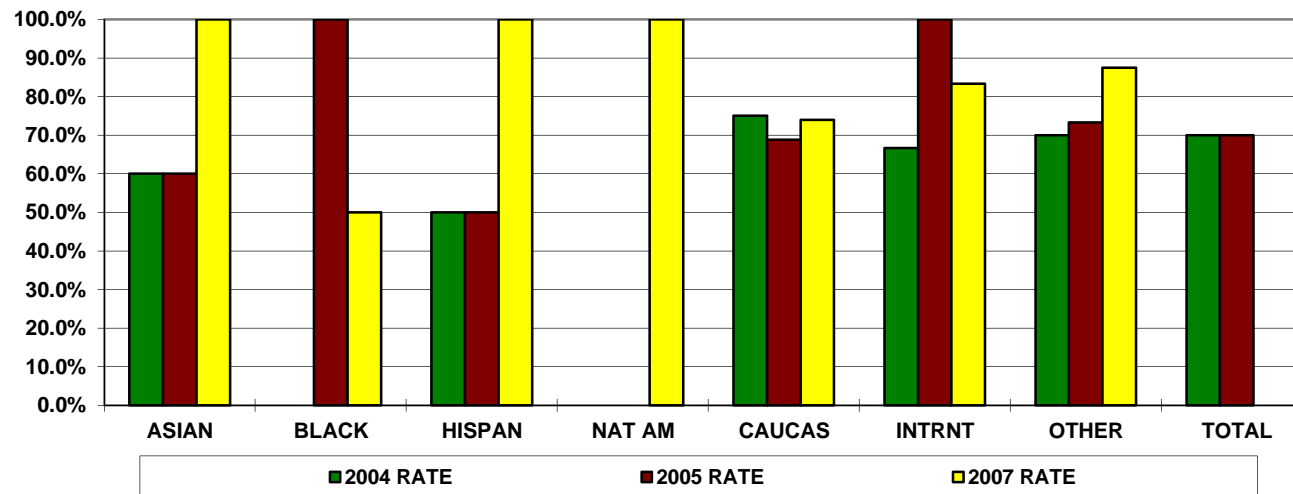
FEMALES -- TRANSFER COHORT

FALL TERM	COHORT	REVISED COHORT	END OF YEAR 4		END OF YEAR 5		END OF YEAR 6	
2002	6	6	3	50.0%	2	83.3%	0	83.3%
2003	7	7	3	42.9%	1	57.1%	0	57.1%
2004	3	3	1	33.3%	1	66.7%	0	66.7%
2005	1	1	0	0.0%	0	0.0%	0	0.0%
2006	3	3	2	66.7%	1	100.0%	0	100.0%
2007	3	3	2	66.7%	1	100.0%	0	100.0%
2008	1	1	0	0.0%	1	100.0%		
2009	4	4	2	50.0%				

GRADUATION RATES -- TRANSFER COHORT
BY ETHNICITY -- 6 YEAR GRAD RATE

ETHNICITY	ASIAN	BLACK	HISPAN	NAT AM	CAUCAS	INTRNT	OTHER	TOTAL
2004 COHORT	5	2	6	0	68	3	10	94
2004 RATE	60.0%	0.0%	50.0%	0.0%	75.0%	66.7%	70.0%	70.0%
2005 COHORT	5	1	2	1	64	2	15	90
2005 RATE	60.0%	100.0%	50.0%	0.0%	68.8%	100.0%	73.3%	70.0%
2006 COHORT	3	2	3	1	54	13	4	80
2006 RATE	100.0%	50.0%	100.0%	100.0%	66.7%	84.6%	100.0%	74.0%
2007 COHORT	2	4	1	2	50	6	8	73
2007 RATE	100.0%	50.0%	100.0%	100.0%	74.0%	83.3%	87.5%	

GRADUATION RATES BY ETHNICITY



GRADUATION RATES BY ORIGINAL TUITION CLASSIFICATION
TRANSFER COHORT

GRADUATION RATES -- RESIDENTS -- TRANSFER COHORT

FALL TERM	COHORT	REVISED COHORT	END OF YEAR 4		END OF YEAR 5		END OF YEAR 6	
2000	44	44	20	45%	2	50%	3	57%
2001	45	45	22	49%	3	56%	2	60%
2002	48	48	25	52%	5	63%	2	67%
2003	56	56	28	50%	6	61%	4	68%
2004	72	72	39	54%	10	68%	3	72%
2005	70	70	46	66%	1	67%	0	67%
2006	55	55	35	64%	6	75%	1	76%
2007	54	54	36	67%	8	81%	1	83%
2008	27	27	17	63%	5	81%		
2009	66	66	41	62%				

GRADUATION RATES -- NON-RESIDENTS -- TRANSFER COHORT

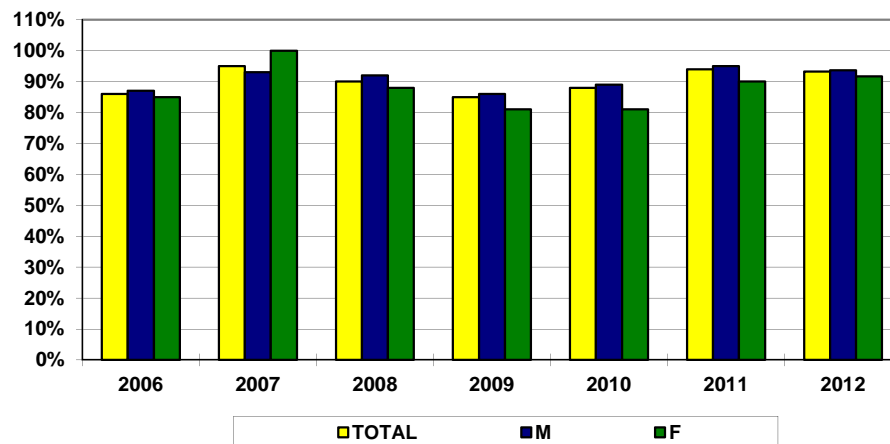
FALL TERM	COHORT	REVISED COHORT	END OF YEAR 4		END OF YEAR 5		END OF YEAR 6	
2000	26	26	11	42%	0	42%	1	46%
2001	20	20	15	75%	0	75%	0	75%
2002	16	16	9	56%	2	69%	0	69%
2003	22	22	15	68%	0	68%	0	68%
2004	22	22	14	64%	0	64%	0	64%
2005	20	20	14	70%	1	75%	0	75%
2006	25	25	16	64%	1	68%	0	68%
2007	19	19	10	53%	1	58%	0	58%
2008	24	24	14	58%	3	71%		
2009	25	25	18	72%				

PERSISTENCE RATES -- TRANSFER COHORT BY GENDER

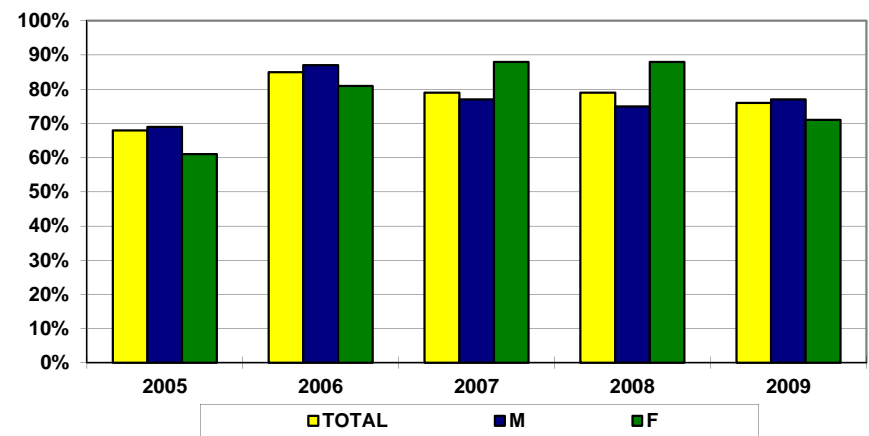
FALL	COHORT			YEAR 2			YEAR 3			YEAR 4			YEAR 5		
	TOTAL	M	F	TOTAL	M	F	TOTAL	M	F	TOTAL	M	F	TOTAL	M	F
2003	78*	54	23	77%	78%	74%	73%	78%	61%	36%	35%	39%	8%	7%	9%
2004	98*	77	20	81%	78%	90%	67%	66%	70%	39%	36%	45%	9%	8%	15%
2005	90	72	18	83%	86%	72%	68%	69%	61%	26%	24%	33%	3%	3%	6%
2006	80	53	27	86%	87%	85%	85%	87%	81%	48%	43%	56%	20%	19%	22%
2007	73	57	16	95%	93%	100%	79%	77%	88%	51%	54%	38%	11%	11%	13%
2008	52	36	16	90%	92%	88%	79%	75%	88%	40%	44%	31%	13%	11%	19%
2009	91	70	21	85%	86%	81%	76%	77%	71%	37%	37%	38%	9%	11%	0%
2010	73	57	16	88%	89%	81%	74%	72%	821%	36%	35%	38%			
2011	77	56	21	94%	95%	90%	88%	88%	91%						
2012	103	79	24	93%	94%	92%									

* Select records in the dataset do not report gender.

FRESHMEN TO SOPHOMORE PERSISTENCE RATE



SOPHOMORE TO JUNIOR PERSISTENCE RATE



PERSISTENCE RATES BY ETHNICITY -- TRANSFER COHORT

FALL	COHORT					YEAR 2					YEAR 3					YEAR 4					YEAR 5				
	ASIAN	BLACK	HISP	NAT AM	HAW	ASIAN	BLACK	HISP	NAT AM	HAW	ASIAN	BLACK	HISP	NAT AM	HAW	ASIAN	BLACK	HISP	NAT AM	HAW	ASIAN	BLACK	HISP	NAT AM	HAW
2001	4	1	4	0	na	75%	100%	75%	0%	na	75%	100%	50%	0%	na	25%	0%	25%	0%	na	0%	0%	0%	0%	na
2002	1	1	3	3	na	100%	100%	100%	100%	na	100%	100%	100%	67%	na	100%	100%	67%	33%	na	0%	0%	0%	33%	na
2003	6	3	5	1	na	50%	100%	80%	0%	na	50%	100%	80%	0%	na	33%	67%	40%	0%	na	17%	0%	20%	0%	na
2004	5	2	6	0	na	60%	100%	83%	0%	na	80%	100%	67%	0%	na	40%	0%	50%	0%	na	20%	0%	17%	0%	na
2005	5	1	2	1	na	80%	100%	50%	100%	na	80%	100%	50%	100%	na	40%	0%	0%	100%	na	0%	0%	0%	100%	na
2006	3	2	3	1	na	100%	50%	100%	100%	na	100%	50%	100%	0%	na	33%	50%	67%	0%	na	33%	0%	33%	0%	na
2007	2	4	1	2	na	100%	100%	100%	100%	na	50%	100%	100%	50%	na	50%	75%	100%	0%	na	0%	75%	100%	0%	na
2008	1	0	1	0	na	100%	0%	100%	0%	na	100%	0%	100%	0%	na	100%	0%	100%	0%	na	100%	0%	100%	0%	na
2009	6	1	3	1	na	71%	100%	67%	100%	na	71%	100%	67%	100%	na	29%	0%	0%	0%	na	0%	0%	0%	0%	na
2010	2	1	6	2	0	50%	100%	100%	0%	0%	50%	100%	83%	0%	0%	50%	0%	67%	0%	0%					
2011	3	2	6	0	0	100%	50%	100%	0%	0%	67%	50%	100%	0%	0%										
2012	5	4	3	0	0	100%	75%	100%	0%	0%															

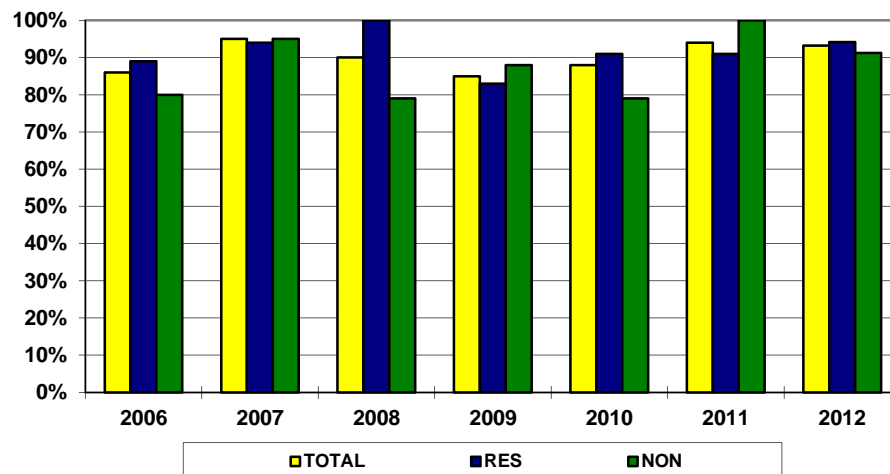
FALL	COHORT					YEAR 2					YEAR 3					YEAR 4					YEAR 5				
	MULTI	ETHNIC COMB	CAUC	INTRN	UNASW	MULTI	ETHNIC COMB	CAUC	INTRN	UNASW	MULTI	ETHNIC COMB	CAUC	INTRN	UNASW	MULTI	ETHNIC COMB	CAUC	INTRN	UNASW	MULTI	ETHNIC COMB	CAUC	INTRN	UNASW
2001	na	9	46	5	5	na	77%	74%	20%	80%	na	67%	64%	40%	50%	na	22%	32%	20%	50%	na	0%	11%	0%	0%
2002	na	8	43	6	7	na	100%	86%	83%	100%	na	88%	67%	50%	86%	na	63%	47%	33%	29%	na	13%	14%	0%	14%
2003	na	15	52	5	6	na	67%	77%	80%	100%	na	67%	71%	100%	83%	na	40%	35%	40%	33%	na	13%	8%	0%	0%
2004	na	13	72	3	10	na	77%	81%	100%	80%	na	77%	65%	67%	70%	na	38%	39%	0%	50%	na	15%	8%	0%	10%
2005	na	9	64	2	15	na	78%	84%	100%	80%	na	78%	64%	100%	73%	na	33%	27%	50%	13%	na	11%	2%	0%	7%
2006	na	9	53	13	5	na	89%	83%	92%	100%	na	78%	81%	100%	100%	na	44%	45%	62%	40%	na	22%	22%	8%	25%
2007	na	9	50	6	8	na	100%	96%	100%	75%	na	78%	78%	100%	75%	na	56%	48%	83%	38%	na	44%	6%	0%	13%
2008	na	2	26	14	10	na	100%	96%	79%	90%	na	100%	74%	79%	89%	na	100%	44%	21%	44%	na	100%	15%	0%	11%
2009	na	12	45	13	21	na	75%	80%	92%	95%	na	75%	78%	77%	71%	na	17%	51%	15%	33%	na	0%	11%	0%	13%
2010	1	12	45	9	7	100%	75%	91%	89%	86%	100%	67%	76%	89%	57%	100	50%	33%	22%	43%					
2011	4	15	48	8	6	100%	93%	94%	100%	83%	100%	87%	92%	88%	67%										
2012	6	18	64	13	8	67%	83%	95%	100%	88%															

The collection, storing, and reporting of race and ethnicity changed for higher education in 2009. Two new categories are added as a result of this change; Native Hawaiian (HAW) and Multi Racial (MULTI).

PERSISTENCE RATES -- TRANSFER COHORT BY ORIGINAL TUITION CLASSIFICATION

FALL	COHORT			YEAR 2			YEAR 3			YEAR 4			YEAR 5		
	TOTAL	RES	NON	TOTAL	RES	NON	TOTAL	RES	NON	TOTAL	RES	NON	TOTAL	RES	NON
2003	78	56	22	77%	84%	59%	73%	75%	68%	36%	39%	27%	8%	11%	0%
2004	98	76	22	81%	78%	91%	67%	67%	68%	39%	42%	27%	9%	11%	5%
2005	90	70	20	83%	83%	85%	68%	67%	70%	26%	27%	20%	3%	3%	5%
2006	80	55	25	86%	89%	80%	85%	87%	80%	48%	45%	52%	20%	25%	8%
2007	73	54	19	95%	94%	95%	79%	83%	68%	51%	54%	42%	11%	15%	0%
2008	52	28	24	90%	100%	79%	79%	79%	79%	40%	43%	38%	13%	18%	8%
2009	91	66	25	85%	83%	88%	76%	74%	80%	37%	38%	36%	9%	12%	0%
2010	73	54	19	88%	91%	79%	74%	76%	68%	36%	43%	16%			
2011	77	54	23	94%	91%	100%	88%	85%	96%						
2012	103	69	34	93%	94%	91%									

FRESHMAN TO SOPHOMORE PERSISTENCE RATES



SOPHOMORE TO JUNIOR PERSISTENCE RATES

