

Campus Conference
Integrative Research Culture Workshop
August 19, 2016

3:00 pm Session

Tony gave a presentation on current research initiatives and collaborations followed by Johanna in ORA on *Fund Balances for Research* and Matt in CCIT on *Research Support Services*. (Slides attached.)

After the presentations several topics were offered for discussion:

- a. Combining research centers into institutes
- b. Accelerating buildup of intellectual property
- c. Physical reorganization of research space on campus to achieve interdisciplinary research
- d. Impediments to enhancing inter-institutional collaborations
- e. Impediments to enhancing intra-institutional collaborations

Given the time constraints, the group requested discussion on *Impediments to enhancing inter-institutional collaborations*. Some of the impediments campus is experiencing are:

- lack of external and internal publicity conveying current research initiatives and activities at Mines
- lack of knowledge of competitive proposals due to minimal collaborations with other institutions (matching funds)
- absence of a central data repository with key words
- research website to enhance visibility
- informal seminars on campus for research collaborations
- research displays/exposure on campus for new students and guests
- undergraduate research opportunities
- summer research support
- technical support and editing for large proposal writing and graphics
- project manager for proposals to collect documentation and create a management plan
- tracking finances is difficult
- finding a location for visiting researchers to live, and office space
- parking, and access to campus is difficult for visitors
- training/safety on equipment
- better communications between faculty, ORA and RTT
- more effective Research Council with active research members

4:00 pm session

After the slide presentations, the second group discussed *Impediments to enhancing intra-institutional collaborations*.

- regarding workload – who gets the credit for co-advised students: decrease this kind of barrier that inhibits collaboration

- incentives for collaboration
- enhance collaborations to gain expanded knowledge and create a more effective proposal
- send proposals announcements sooner
- communication mechanism to include key words
- research profiles (people search) with key words
- points of contact across campus

Action item identified: Ye Li (new Library faculty member) has the ability to create a platform data base for research contacts and initiatives. Will get Research Council in the loop to push this.

Integrative Research Culture Workshop

August 19, 2016



COLORADO SCHOOL OF MINES

Research Task Force (TF) Initiatives: Current Status

Initiative	Current Status
Improve Graduate Student Quality	Showcased Mines to prospective grad students at Red Rocks in spring. RTT and Grad office discussing strategies for similar events. Identifying funding for named fellowships for top students.
Faculty Work Load Analysis	President Johnson has assigned this initiative to his team to establish and implement a new workload model.
Improve Faculty Mentoring	Research sessions were added to the Fall FY16 new faculty orientation. RTT office will host a series of brown bag sessions on research topics. Encourage all depts to have formal mentoring policy.
Reduction of Administrative Burden	2 ORA initiatives: Checkbook grant accounting being tested. New contracts administrator hired.
Interdisciplinary Research	TF will work closely with the Research Council Chair in the coming semester to kick start an initiative for hosting research conferences.
Create Grand Challenge Institutes	Discussions ongoing with faculty in several areas. Will need seed funding.

Recent Multi-Partner Initiatives

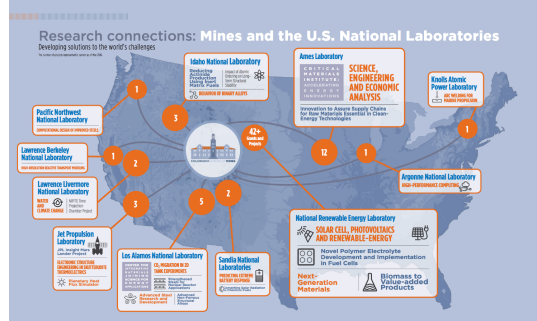
- Renewal of NSF ERC for Urban Water Center
- Alliance for Development of Additive Processing Technologies
- Light Weight Steels
- Carbon Materials for Wind Turbines
- Methane Emissions Reconciliation
- Critical Materials Institute
- Mines/NREL Partnership for International Center for Multiscale Characterization (ICMC)

Major Proposals In the Pipeline

- NSF ERC on Innovation for Carbon Capture, Utilization, and Storage
- NSF MRSEC on Center for Sustainable Materials for Energy (CSM-E)
- NNMI on Center for Process Intensification to Enable Renewables
- NNMI on Clean Energy Manufacturing Innovation Institute

Positioned to Address Major Scientific Challenges

- ☐ Strong connections with Federal Labs
- ☐ Close connections with Front Range Federal Labs
- ☐ Strong industry ties
- ☐ Increased international partnerships
- ☐ Commercialization activities and entrepreneurial outreach



Campus Workshops Held

- ☐ Water
- ☐ Catalysis
- ☐ Membranes
- ☐ Big Data

PI/Financial Manager Fund Balance Summary						
Marvin Blaster			Export report: PDF / Excel			
Grant	Sponsored Research (Inception to Date)	Start Date	End Date	Total Budget	Available Balance*	
400####	Hydrate Modeling and Flow Loop Expl...	9/1/14	8/31/17	\$ 300,000.00	\$	125,000.00
445####	Hydrate Kinetics Studies for the Hy...			##		##
450####	Hydrate Formatin in High Salinity			##		##
450####	Impacts of Inhibitors on Hydrates			##		##
460####	Establishing Industrial Guidelines/			##		##
460####	Hydrate Kinetics Studies for the Hy...			##		##
470####	Desalination by Hydrate Nucleation			##		##
470####	Investigations of the rheological p...			##		##
Fund Professional Development (Current Fiscal Year)				Available Balance*		
111####	Professional Development			\$	139,500.00	
111####	Other PD			\$	(500.00)	
Fund Research Development (Current Fiscal Year)				Available Balance*		
122####	Research Development			\$	10,600.00	
Fund Gifts (Current Fiscal Year)				Available Balance*		
500####	CTR Research PE Hydrate			\$	100,000.00	
510####	Center for Hydrate Research					##
*Includes all current Encumbrances				(Printed Date)		

Grant 400### Balance

Marvin Blaster

Description

Performance Period: IDC Rate:

Labor Costs

Account Pool

Salaries

Tuition

Fringe Benefits

Overhead Costs

Account Pool

Travel

Subcontracts

Supplies/Materials Pool

Equipment

Indirect Costs

Grant 400###

Select Expense Period

Name: Marvin Blaster

Description: Duti aute irure dolor in reprehenderit in voluptate velit esse cillum dolore eu fugiat nulla pariatur.

Performance Period: MM/DD/YY to MM/DD/YY

IDC Rate: N/A

Export report: PDF / Excel

Account Pool	Account	Description	Date	Document	Detail	Expense
Salaries						
	5201	Academic Faculty Salary	1/30/2015	08B2404	Blaster, Marvin	\$ 5,000.00
	5209	Graduate Student Stipend	1/30/2015	08B2404	Hammer, Jack	\$ 900.00
	5218	Hourly Student Help	1/30/2015	08B2404	Black, Jenny	\$ 130.00
	5201	Academic Faculty Salary	1/28/2015	08B2404	Blaster, Marvin	\$ 5,000.00
	5209	Graduate Student Stipend	1/29/2015	08B2404	Hammer, Jack	\$ 900.00
	5201	Academic Faculty Salary	1/30/2015	08B2404	Blaster, Marvin	\$ 1,246.67
	5209	Graduate Student Stipend	1/30/2015	08B2404	Hammer, Jack	\$ 900.00
	5209	Graduate Student Stipend	1/30/2015	08B2404	Black, Jenny	\$ 735.24
	xxxx	Hourly Student Help	1/30/2015	08B2404	Smith, Sam	\$ 479.52
	xxxx	Academic Faculty Salary	1/30/2015	08B2404	Blaster, Marvin	\$ 479.52
	xxxx	Graduate Student Stipend	1/30/2015	08B2404	Hammer, Jack	\$ 990.99
	xxxx	Graduate Student Stipend	1/30/2015	08B2506	Black, Jenny	\$ 735.24
	xxxx	Hourly Student Help	2/28/2015	08B2506	Smith, Sam	\$ 479.52
	xxxx	Academic Faculty Salary	2/28/2015	08B2506	Blaster, Marvin	\$ 1,246.67
	xxxx	Graduate Student Stipend	2/28/2015	08B2506	Hammer, Jack	\$ 990.99
	xxxx	Academic Faculty Salary	2/28/2015	08B2506	Blaster, Marvin	\$ 735.24
	xxxx	Graduate Student Stipend	2/28/2015	08B2506	Hammer, Jack	\$ 479.52
	xxxx	Graduate Student Stipend	2/28/2015	08B2506	Black, Jenny	\$ 1,000.00
	xxxx	Hourly Student Help	2/28/2015	08B2506	Smith, Sam	\$ 900.00
						\$ 20,810.48

Return to 400### Balance Summary

(Printed Date)

Research Support Services (CCIT)

Data Management

- Data Management Plans (templates, tools and reviews)
- Best practices (storage structures, file naming, etc.)
- Data curation (institutional and external repositories)
- Help understanding funder requirements
- Metadata guidance

Consultations

- Evaluate storage options for researchers
- Communicate specific and general IT needs
- Connect researchers with other departments or individuals
- Help navigating IP (or connecting those needing IP help)
- Limited scripting help
- Educational talks for researchers or departments

Matt Ketterling: mketterling@mines.edu
ccit.mines.edu



HPC Resources

- BlueM and Mio
- ~13,000 total compute cores
- Additional accelerator/GPU cores
- Code optimization
- HPC consultations
- Education

Tim Kaiser: tkaiser@mines.edu
hpc.mines.edu

Breakout Groups

- BO#1: Combining research centers into institutes
- BO#2: Accelerating buildup of intellectual property
- BO#3: Physical reorganization of research space on campus to achieve interdisciplinary research
- BO#4: Impediments to enhancing inter-institutional collaborations
- BO#5: Impediments to enhancing intra-institutional collaborations